

# CLEANSING FOUNTAIN

for S.A.T.B. and keyboard  
with optional oboe\*

Words by **WILLIAM COWPER**  
Music: **19th CENTURY TRADITIONAL MELODY**

Arranged by  
**CAROLYN HAMLIN (ASCAP)**

With much expression (♩ = ca. 78)

OBOE

KEYBOARD

SOPRANO

ALTO

TENOR

BASS

There is a foun - tain filled with blood, drawn...

\* Oboe part available as PDF free downloadable document from [www.alfred.com/downloads](http://www.alfred.com/downloads).

Copyright © 2011 by Alfred Music Publishing Co., Inc.  
All Rights Reserved. Printed in USA.  
ALFRED MUSIC PUBLISHING. [www.alfred.com](http://www.alfred.com)

THE CCLI LICENSE DOES NOT GRANT PERMISSION TO PHOTOCOPY THIS MUSIC.

7 *mp*

7 *mp*

and sin - ners plunged be -

from Im - man - uel's veins,



10

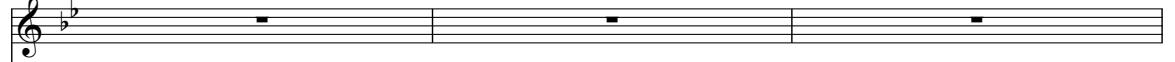
10 *mf*

neath that flood lose all their guil - ty stains. Lose

*mf*



13



13

Vocal and bass staves with lyrics: "all their guilt - ty stains, lose all their" and "all their guilt ty".

all their guilt - ty stains, lose all their

all their guilt ty

Piano accompaniment for the first system, including treble and bass clefs.

16



16

Vocal and bass staves with lyrics: "guilt - ty stains, and sin - ners plunged be -" and "stains,".

guilt - ty stains, and sin - ners plunged be -

stains,

Piano accompaniment for the second system, including treble and bass clefs.

19

neath that flood lose all their guilty stains.

22

*mp*

The

*mp*

dy - ing thief re - joiced to see that\_ foun - tain in his

*mp*

28 *mf* there may  
day, and there may I, though vile as he, wash\_

*mf*

*mf*

31 all my  
all my sins a - way. Dear

*mp*

*mp*

*mp*

34 OBOE

34 *a little more reflective*

dy - ing Lamb, Thy pre - cious blood shall nev - er lose its

37

37 *mf*

clean - sing pow'r, till all the ran - somed Church of God be

*mf*

40 *mp*

40 saved to *mp* with added intensity

40 saved to sin\_\_ no more. E'er since by faith I

*mp*

43

43 *mf*

see the stream Thy flow - ing wounds sup -

*mf*

*mf*

45 46

45 46

ply, *f* re - deem - ing love has

*f*

47

47 been my

been my theme, and shall be till I

Preview Only  
Legal Use Requires Purchase



49

die. When

*ff*

52 *broadly*

52 this poor, lisp - ing stam - m'ring tongue lies

this poor, lisp - ing stam - m'ring tongue lies

*broadly*

54

54 si - lent in the grave, then

si - lent in the grave, then

56

56 in a no - ble, sweet - er song I'll

in a no - ble, sweet - er song I'll

58 60

58 sing Thy pow'r to save. 60

61

61 save. I'll sing Thy pow'r, I'll sing Thy pow'r to

pow'r to save.

Legal Use Requires Purchase

64

*rit.*

64

*rit.*

save.

*mp*

Then

67 Somewhat slower

67

*mp*

Then in a no - bler sweet - er song

in a no - bler, sweet - er song I will

Somewhat slower

*mp*

70

70

*mf*

I will sing, I will sing Thy pow'r to

mf

sing,

*mf*

72

72

save, Thy pow'r to

I will sing Thy pow'r to

save, Thy pow'r to

74

*mp*

74

*mp*

save. I will sing Thy

*mp*

*mp*

76

*p*

76

pow'r to save.

*p*

Preview Only  
Legal Use Requires Purchase