

# The Best of Belwin Jazz

# **JAZZ BAND**

# **SERIES**

# **COLLECTION**

## **E<sub>b</sub> BARITONE SAXOPHONE**

### **Contents**

*Page numbers in each book vary;  
therefore, each player must refer to the contents page in his or her own book.*

Get It On .....	12
Greensleeves.....	24
Jumpin' At The Woodside.....	18
Just In Time .....	8
Lester Leaps In .....	2
My Foolish Heart.....	10
Oh, Lady Be Good! .....	16
On Green Dolphin Street.....	6
Summertime.....	22
This Can't Be Love .....	14



Alfred Music Publishing Co., Inc.  
16320 Roscoe Blvd., Suite 100  
P.O. Box 10003  
Van Nuys, CA 91410-0003  
**alfred.com**

© 2009 BELWIN-MILLS PUBLISHING CORP.,  
a division of ALFRED MUSIC PUBLISHING CO., INC.  
All Rights Reserved Including Public Performance

ISBN-10: 0-7390-6667-6  
ISBN-13: 978-0-7390-6667-6

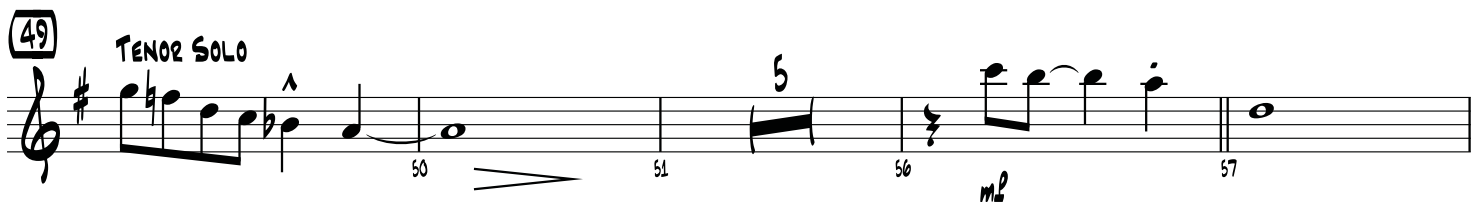
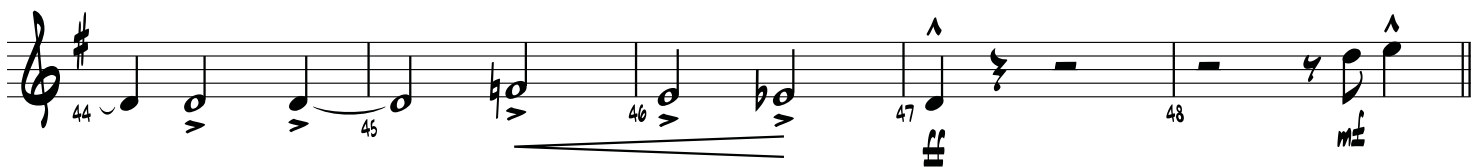
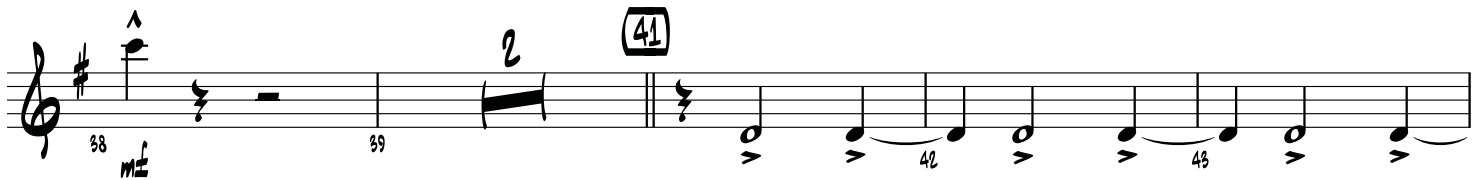
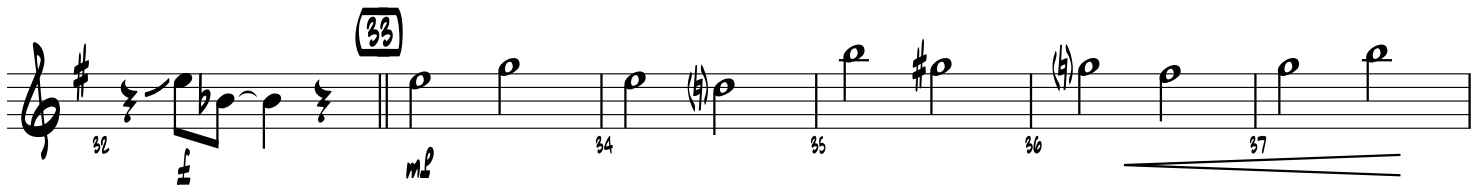
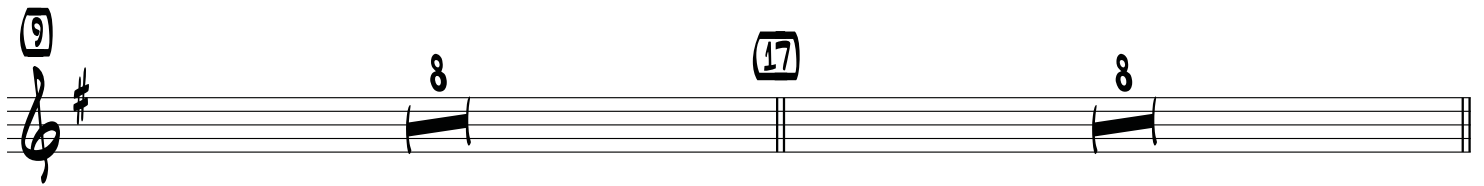
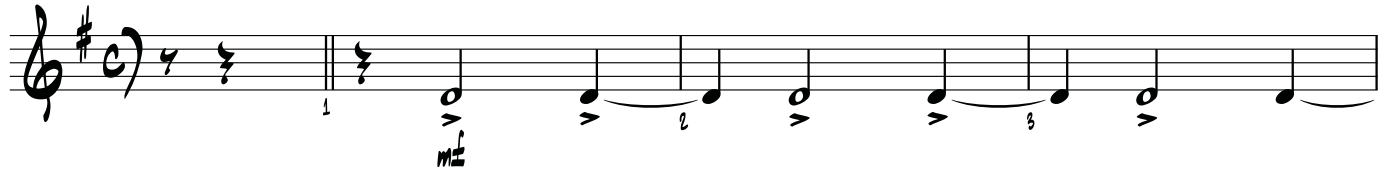
Any duplication, adaptation or arrangement of the compositions contained in this book requires the written consent of the Publisher.  
No part of this book may be photocopied or reproduced in any way without permission.  
Unauthorized uses are an infringement of the U.S. Copyright Act and are punishable by law.

# LESTER LEAPS IN

**E♭ BARITONE SAXOPHONE**

By **LESTER YOUNG**  
Arranged by **RICH SIGLER**

TEMPO ♩ = 156-170



# ON GREEN DOLPHIN STREET

E♭ BARITONE SAXOPHONE

Music by BRONISLAU KAPER  
Lyrics by NED WASHINGTON  
Arranged by DAVE WOLPE

MODERATE SWING (♩ = 160)

4TH TRB. CUE

# SUMMERTIME

**E♭ BARITONE SAXOPHONE**

By GEORGE GERSHWIN,  
DuBOSE and DOROTHY HEYWARD  
and IRA GERSHWIN  
Arranged by DAVE RIVELLO

TEMPO ♩ = 110 - 120 SWING FEEL

1 3 5 7 9 11 13 15 17 19 21 23 25 27 29 31 33 35 37 39 41 43 45 47 49

© 1935 (Renewed) GEORGE GERSHWIN MUSIC, IRA GERSHWIN MUSIC  
and DuBOSE AND DOROTHY HEYWARD MEMORIAL FUND  
This Arrangement © 2006 GEORGE GERSHWIN MUSIC, IRA GERSHWIN MUSIC  
and DuBOSE AND DOROTHY HEYWARD MEMORIAL FUND  
All Rights Administered by WB MUSIC CORP.

GERSHWIN®, GEORGE GERSHWIN® and IRA GERSHWIN™ are trademarks of Gershwin Enterprises  
All Rights Reserved including Public Performance