

GRANDMA'S FEATHER BED

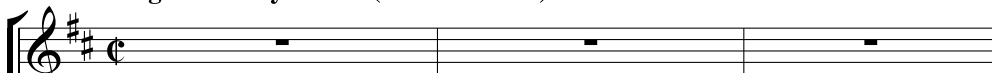
for 2-part voices and piano
with optional SoundTrax CD*

Arranged by
SALLY K. ALBRECHT

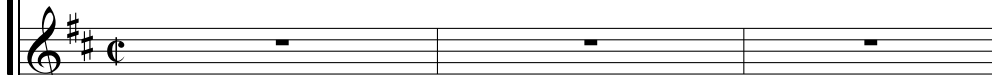
Words and Music by
JIM CONNOR

Bright country 2-beat (♩ = ca. 92-100)

PART I



PART II



Bright country 2-beat (♩ = ca. 92-100)

PIANO

mf

D A Bm⁷ Cdim⁷

4

mf

Plink - a, plink - a - plink.

mf

Plink - a, plink - a - plink.

A/C# D

* Also available for 3-part mixed (32911) and S.S.A. (32912).
SoundTrax CD available (32914).

© 1973 (Renewed) FSMGI (IMRO) and CHERRY LANE MUSIC PUBLISHING COMPANY (ASCAP)
All Rights for FSMGI (IMRO) Controlled and Administered by STATE ONE MUSIC AMERICA (BMI)
This Arrangement © 2010 FSMGI (IMRO) and CHERRY LANE MUSIC PUBLISHING COMPANY (ASCAP)
All Rights Reserved. Printed in USA.

Sole Selling Agent for This Arrangement: Alfred Music Publishing Co., Inc.
To purchase a full-length performance recording of this piece, go to alfred.com/downloads

7 SOLO or SMALL GROUP

9 *mf*

When I was a

Plink-a, plink-a - plink. Plink-a, plink-a,

Plink-a, plink-a - plink. Plink-a, plink-a,

lit - tle bit - ty boy just up off the floor,
(girl)

plink-a, plink-a, plink-a, plink-a - plink.

plink-a, plink-a, plink-a, plink-a - plink.

G D A/C#