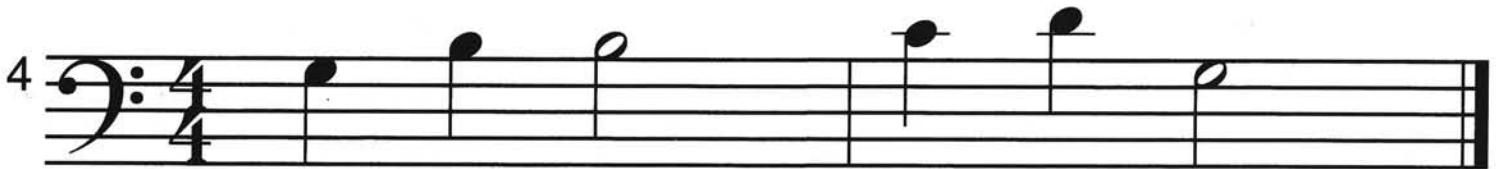


G POSITION

Your teacher will play melodies in the G POSITION.

One note in each melody will be played incorrectly. Circle the incorrect note.



Half and Whole Steps

- Color the appropriate keys RED for the HALF STEPS.
- Color the appropriate keys BLUE for the WHOLE STEPS.
- Write H for HALF STEP or W for WHOLE STEP on the line.

1

2

3

4

5

6

Time Signatures

Your teacher will play melodies in $\frac{2}{4}$ or $\frac{3}{4}$ time.

- Circle the $\frac{2}{4}$ if you hear 2 beats in each measure.
- Circle the $\frac{3}{4}$ if you hear 3 beats in each measure.

1

 $\frac{2}{4}$ $\frac{3}{4}$

2

 $\frac{2}{4}$ $\frac{3}{4}$

3

 $\frac{2}{4}$ $\frac{3}{4}$

4

 $\frac{2}{4}$ $\frac{3}{4}$

5

 $\frac{2}{4}$ $\frac{3}{4}$

6

 $\frac{2}{4}$ $\frac{3}{4}$