

Nanny Claus:

The North Pole Nanny

A Magical Christmas Musical for Unison and 2-Part Voices

by Andy Beck and Brian Fisher

Recording Orchestrated by Steve Herold

WHAT DO I NEED?

To review a musical, you have two choices...

Director's Score:

Script plus full piano/vocal version of songs, prop lists, costume, character, and set descriptions.

Preview Pack:

Includes one copy of the Singer's Edition (vocal lines and script) plus a Listening CD recording (full performance only—with voices).

I'm ready to perform this musical and want to save money...

Performance Pack w/CD:

A price-saving pack which includes a Director's Score, 10 Singer's Editions, and the SoundTrax CD (Accompaniment/Performance).

Minimum purchase for performance:

1 Director's Score and 10 Singer's Editions

I want to perform with professional recordings...

SoundTrax CD:

A professional recording featuring a full performance of the musical, including script, followed by orchestrated accompaniment tracks.

Also available...

Singer's Edition 5-Pack:

Includes five copies of the Singer's Edition.

Listening CD:

A full performance recording (with voices and script). Designed to preview and/or help teach the musical.

Please visit alfred.com for a complete component and up-to-date price listing.

Musical Sequence

Title	Score	Singer's Edition
1. The Busiest Time of Year (Elf Chorus)	6	6
2. The North Pole Nanny (Nanny Claus, Father Elf, and Mother Elf)	13	11
3. Nothing Like a Smile at Christmas (Nanny Claus, Ellie, Eddie, and Emily)	19	14
4. Busy Crossover #1 (Elf Chorus)	26	17
5. A Day with a Snowman (Snowman, Nanny Claus, Ellie, Eddie, Emily, and Elf Chorus)	29	19
6. Snowman Tag (Instrumental)	40	25
7. Make a Christmas Wish (Nanny Claus)	42	26
8. Busy Crossover #2 (Elf Chorus)	45	27
9. Candy Cane Disaster (Mother Elf and Sweet Shoppe Elves)	48	30
10. Candy Cane Tag (Instrumental)	58	35
11. Make a Christmas Wish (Reprise) (Ellie, Eddie, Emily, Nanny Claus, and Mother Elf)	60	36
12. Busy Crossover #3 (Elf Chorus)	63	37
13. Sorry, Santa! (Father Elf and Workshop Elves)	66	39
14. The Argument (Father Elf and Mother Elf)	73	43
15. Finale (All)	75	44
16. Bows (All)	80	47

Performance time: approximately 45 minutes

See back cover for CD Track Numbers.



NANNY CLAUS: THE NORTH POLE NANNY

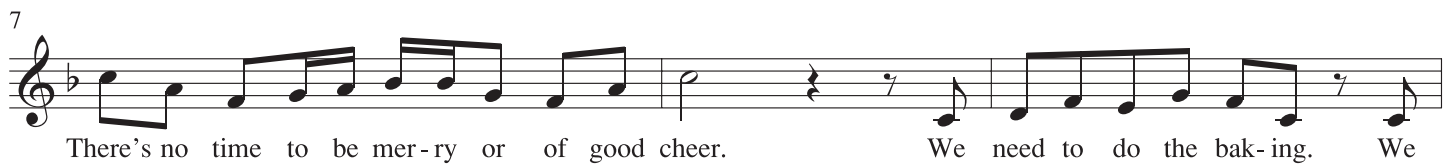
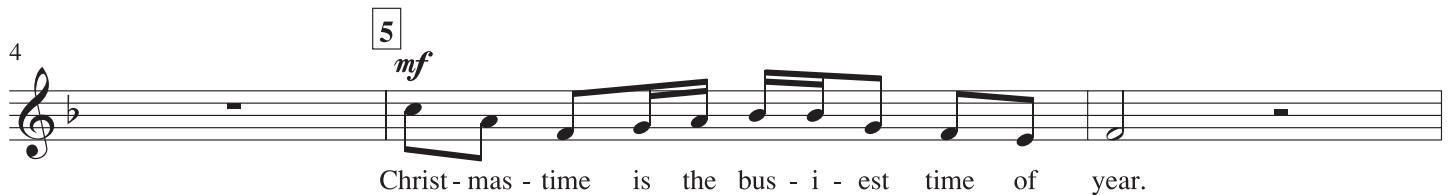
(December 21st, a busy street corner at the North Pole. There are three building exteriors in view — the Sweet Shoppe downstage right, Santa's Workshop downstage left, and the Elf family home upstage center. It is evening, and all of the Elves are headed home after a very long day at work. The voice of Nanny Claus is heard just before the downbeat.)

NANNY: (offstage) Can you imagine what the North Pole is like during the month of December?
There's so much to do, so many jobs, and so many things to remember.
Now, while the elves are bustling about and getting their Christmas work done,
Do you suppose they ever take time to enjoy it, or have any fun?

1. THE BUSIEST TIME OF YEAR (Elf Chorus)

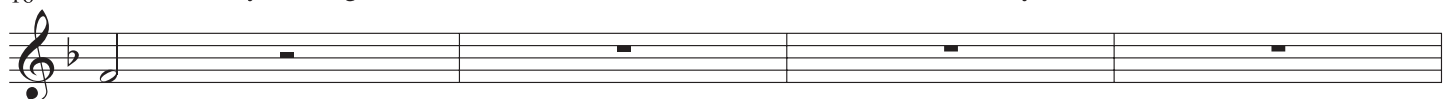
Busy (♩ = ca. 108) (The Elf Chorus enters and fills the stage.)

ELF
CHORUS



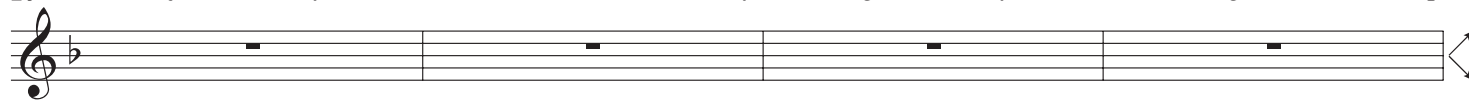
SANTA: (heard over a loud speaker)

16 Attention all toy-making elves! This is Santa Claus. We still have thousands of toys to make before Christmas Eve.



year.

20 And with just three days left, there's no time to waste. See you all bright and early tomorrow morning at the Workshop!



24 PART I
mf

Fa, fa la la la la, fa la la la la, fa la la la la, fa la.

PART II
mf

Fa la la la la, fa la la la la, fa la la la la, fa, fa la.

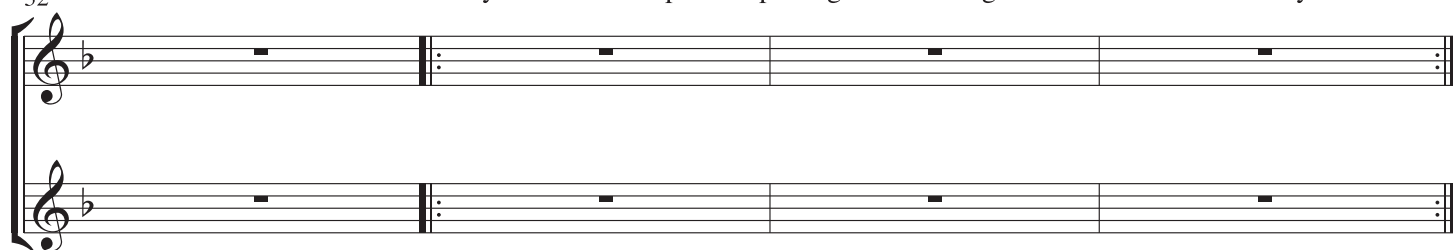
28

Three more days till Christ - mas!

Three more days till Christ - mas!

MRS. CLAUS: (*heard over a loud speaker*)

Attention all Sweet Shoppe elves! It's Mrs. Claus. As of today, we've finished all the gingerbread men and fruitcakes, but we haven't even started the candy canes. Please plan on putting in extra long hours for the next few days!



36

37 *mf*

Christ-mas-time is the bus - i - est time of year.

mf

Christ-mas-time is the bus - i - est time of