

from "Babes in Arms"  
**JOHNNY ONE NOTE**

for S.S.A. voices and piano  
 with optional SoundPax and SoundTrax CD\*

Arranged by  
**LISA DeSPAIN**

Words by **LORENZ HART**  
 Music by **RICHARD RODGERS**

Broadway Two-beat (♩ = 120)

PIANO

*mp*

The piano introduction consists of two staves. The right hand plays a series of quarter notes in a descending sequence: G4, F4, E4, D4, C4, B3, A3, G3. The left hand plays a series of half notes: G2, F2, E2, D2, C2, B1, A1, G1. The tempo is marked as Broadway Two-beat (♩ = 120).

5 *mp unison*

John-ny could on - ly sing one note,

The first vocal entry is marked with a box containing the number 5 and the instruction *mp unison*. The vocal line consists of a single eighth note G4. The piano accompaniment continues with the same descending sequence of notes as in the introduction. The right hand has a *sim.* (simile) marking over a series of quarter notes: G4, F4, E4, D4, C4, B3, A3, G3. The left hand continues with half notes: G2, F2, E2, D2, C2, B1, A1, G1.

9

John-ny could on - ly sing one note,

The second vocal entry is marked with a box containing the number 9. The vocal line consists of a single eighth note G4. The piano accompaniment continues with the same descending sequence of notes as in the introduction. The right hand has a *sim.* (simile) marking over a series of quarter notes: G4, F4, E4, D4, C4, B3, A3, G3. The left hand continues with half notes: G2, F2, E2, D2, C2, B1, A1, G1.

\* Also available for S.A.T.B. (31146), S.A.B. (31147), and 2-part (31149).  
 SoundTrax CD available (31150). SoundPax available (31151) – includes Score and set of parts  
 for Flute, Alto Saxophone, Tenor Saxophone, 2 Trumpets, Trombone, Bass, and Drumset.

© 1937 (Renewed) by CHAPPELL & CO., INC.  
 Rights for the Extended Renewal Term in the U.S. controlled by  
 WB MUSIC CORP. and WILLIAMSON MUSIC CO.  
 This Arrangement © 2009 by WB MUSIC CORP. and WILLIAMSON MUSIC CO.  
 All Rights Reserved

Sole Selling Agent for This Arrangement: Alfred Publishing Co., Inc.

13

*sub. p cresc.*



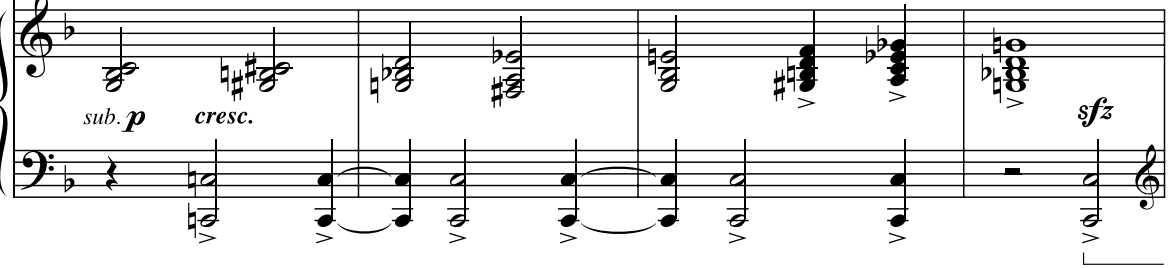
John-ny could on - ly sing one note and the note he sang was this:

*sub. p cresc.*



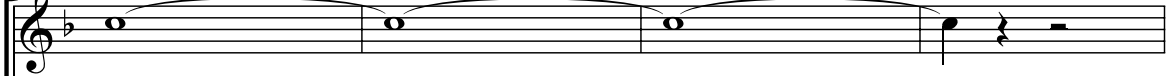
John-ny could on - ly sing one note and the note he sang was this:

C7 C#7/C C9 F#dim7/C C7 G#dim7/C A dim7/C G min7/C



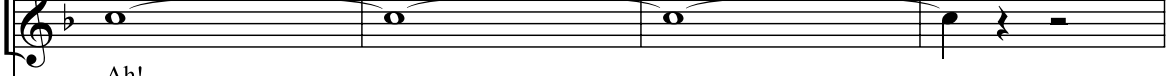
17

*ff*



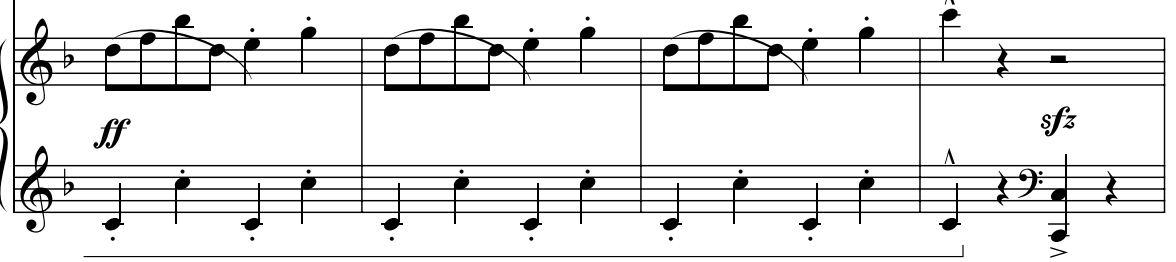
Ah!

*ff*



Ah!

Bb/C C Bb/C C Bb/C C



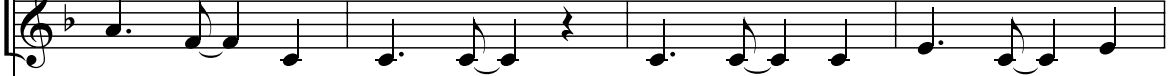
21

*mf*



Poor John - ny One Note... sang out... with gus - to... and

*mf*



Poor John - ny One Note... sang out... with gus - to... and

F (add2) C min7 F (add2) C9

