

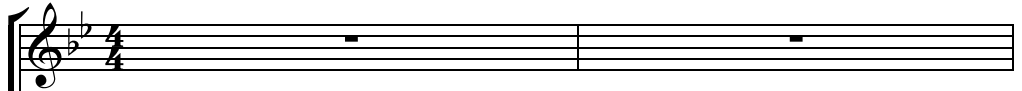
FOLLOW THAT STAR

for S.A.T.B. voices, a cappella

by BRIAN LEWIS (ASCAP)

Joyfully (♩ = ca. 160)

SOPRANO
ALTO



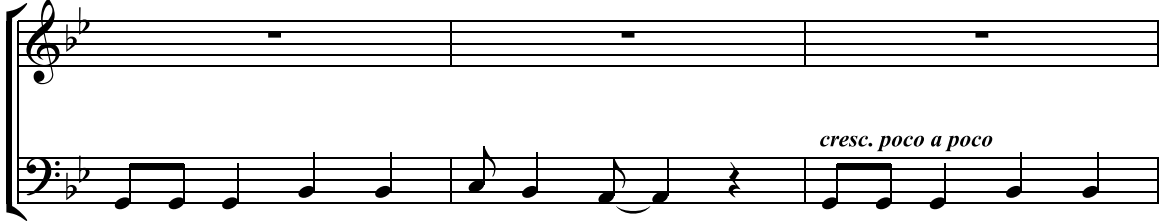
BASS only
p

TENOR
BASS



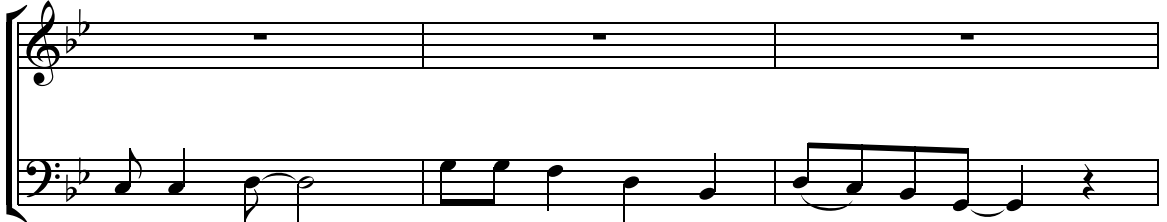
Fol - low that star to Beth - le - hem. ___

3



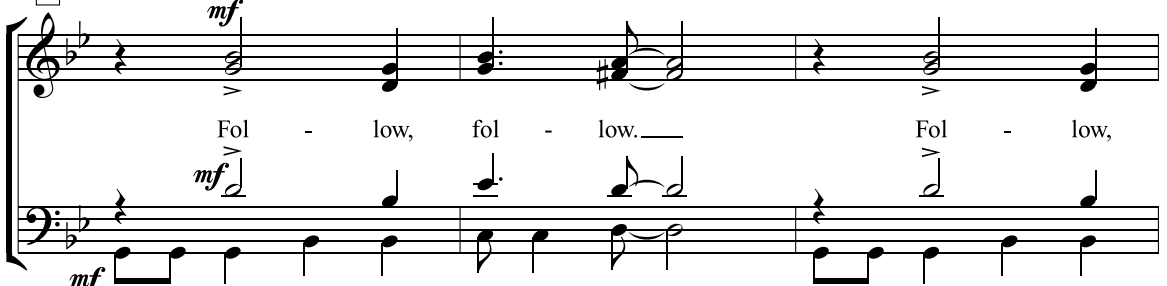
Fol - low that star to Beth - le - hem. ___ Fol - low that star to

6



Beth - le - hem. ___ Fol - low that star to Beth - le - hem. ___

9



Fol - low, fol - low. ___ Fol - low,

Fol - low that star to Beth - le - hem. ___ Fol - low that star to

Copyright © 2009 by Alfred Publishing Co., Inc.
All Rights Reserved. Printed in USA.

To purchase a full-length performance recording of this piece, go to alfred.com/downloads

12

fol - low. Fol - low, fol - low.
Beth - le - hem. Fol - low that star to Beth - le - hem.

15

Fol - low that star to Beth - le - hem.

17

f See the Wise Men trav' - lin' far, they were told to

20

fol - low that star. Bright star shin - ing, fill - ing the night.

23

Fol - low - ing that guid - ing light.