

dedicated to the participants of the 2009 Charlotte-Mecklenberg All County Chorus
 Tim Foskey, Chair—Sally K. Albrecht, Guest Conductor

FOR THE TRUMPET SHALL SOUND

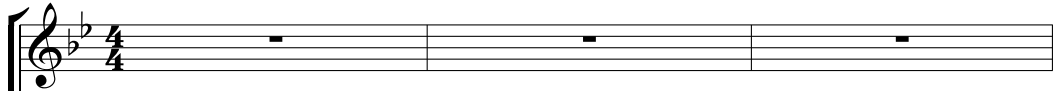
for 2-part/S.S.A. voices and piano
 with optional trumpet, optional SoundPax, and SoundTrax CD*

Inspired by Corinthians 15: 51-52

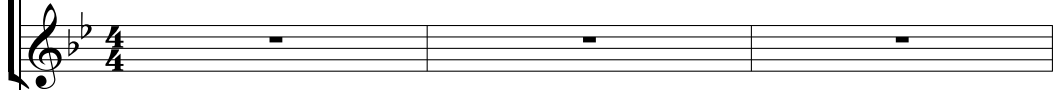
Words and Music by
SALLY K. ALBRECHT

With majesty (♩ = ca. 96-100)

PART I
 (S.I, S.II)

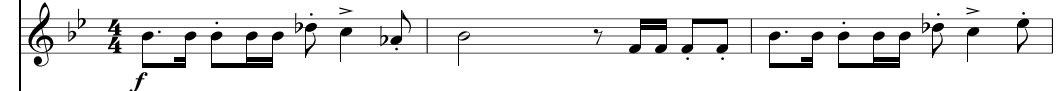


PART II
 (ALTO)



TRUMPET

With majesty (♩ = ca. 96-100)



PIANO

With majesty (♩ = ca. 96-100)



* Also available for S.A.T.B. (31005) and 3-part mixed (31006).
 SoundTrax CD available (31008). SoundPax available (31009) - includes score and set of parts for 3 Trumpets,
 2 Trombones, Bass Trombone, Timpani, Mallets, Percussion, and Snare Drum.

+ In absence of trumpet, pianist should play the trumpet solo part from measure 1-4. Solo trumpet part is
 on page 12.

Copyright © 2009 by Alfred Publishing Co., Inc.
 All Rights Reserved. Printed in USA.

To purchase a full-length performance recording of this piece, go to alfred.com/downloads

4

f 5

For the trum-pet shall sound, and the

f

For the trum-pet shall sound,

Detailed description: This block contains measures 4, 5, and 6 of the musical score. The vocal line (top staff) has lyrics: "For the trum-pet shall sound, and the" in measure 4, and "For the trum-pet shall sound," in measure 5. A piano accompaniment (middle staff) features a triplet of eighth notes in measure 5. The grand staff (bottom two staves) shows chords in the right hand and a steady eighth-note bass line in the left hand.

7

earth will re-sound! And we shall all be

and the earth will re-sound! And we shall all be

Detailed description: This block contains measures 7, 8, and 9 of the musical score. The vocal line (top staff) has lyrics: "earth will re-sound! And we shall all be" in measure 7, and "and the earth will re-sound! And we shall all be" in measure 8. A piano accompaniment (middle staff) features a triplet of eighth notes in measure 8. The grand staff (bottom two staves) shows chords in the right hand and a steady eighth-note bass line in the left hand.