

EACH OF US HAS A LIGHT

for 2-part voices and piano
with optional SoundTrax CD*

Words and Music by
SALLY K. ALBRECHT
and **JAY ALTHOUSE**

Gospel-style swing (♩ = ca. 100-104)

PART I

PART II

PIANO

Gospel-style swing (♩ = ca. 100-104)

mf

B^b F/A Gm B^b/F

5

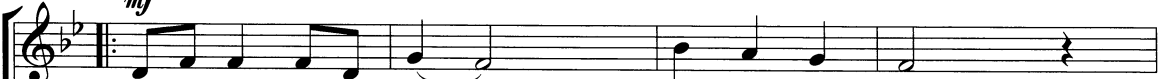
E^b Edim⁷ B^b/F Cm⁷ E^b/F B^b F Gm⁷ F/A

* SoundTrax CD available (30989).

Copyright © 2009 by Alfred Music
All Rights Reserved. Printed in USA.
To purchase a full-length performance recording of this piece, go to alfred.com/downloads

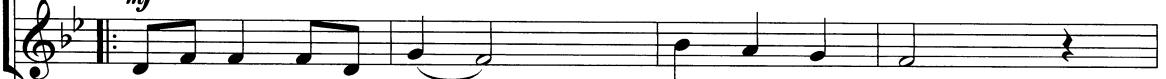
10

mf



Each of us has a light — shin - ing in - side.
Each of us has a hope — burn - ing in - side.

mf

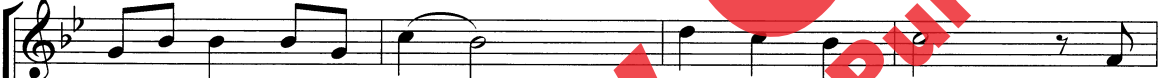


Each of us has a light — shin - ing in - side.
Each of us has a hope — burn - ing in - side.

B^b F/A Gm B^b/F



14



Each of us has a light — we can - not hide. A
Each of us has a hope — we can not hide. A



Each of us has a light — we can - not hide. A
Each of us has a hope — we can not hide. A

E^b B^b/D C7 F7 E^b/G F7/A



18



flash, a spark of bril - liance, it's true.
wish, a dream we want to come true.



flash, a spark of bril - liance, it's true.
wish, a dream we want to come true.

B^b D7/A Gm B^b7/F E^b Edim7



22

Each of us has a light — shin - ing through.
 Each of us has a hope — burn - ing through.

Each of us has a light — shin - ing through.
 Each of us has a hope — burn - ing through.

B^b/F Gm Cm⁷ E^b/F B^b F Gm⁷ F/A

27

Oh —

Traditional Spiritual

This lit - tle light of mine, I'm gon - na let it shine.

B^b F/A Gm B^b/F

31

This lit - tle light of mine, I'm gon - na let it shine. A

Oh — I'm gon - na let it shine. A

E^b B^b/D C⁷ F⁷ E^b/G F⁷/A

35

flash, a spark of bril - liance, it's true.

flash, a spark of bril - liance, it's true.

B^b D⁷/A Gm B^b7/F E^b Edim⁷

39

Each of us has a light _____ shin - ing through.

Each of us has a light _____ shin - ing through.

B^b/F Gm Cm⁷ E^b/F B^b

43

Each of us has a light. _____

Each of us has a light. _____

B^b Gm B^b Gm

47

Each of us has a light shin - ing

Each of us has a light shin - ing

B^b Gm Cm E^b/F

51

f through,

f through,

B^b B^b/D E^b

54

rit. shin - ing through.

rit. shin - ing through.

Cm/F E^b/F B^b B^b7

rit. Straight eighths