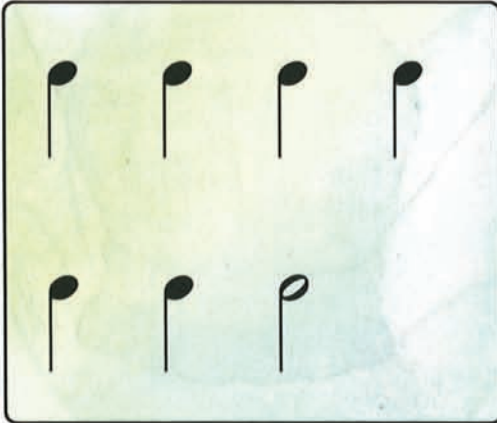


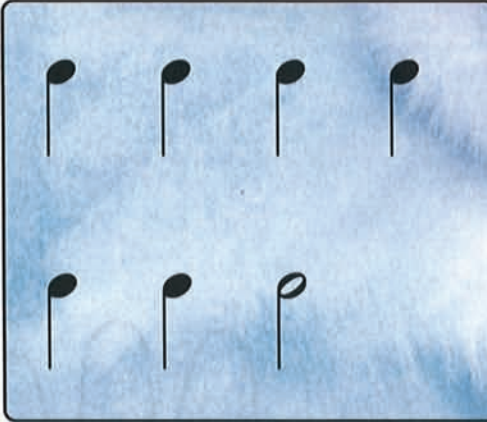
Quarter and Half Notes

Your teacher will clap a rhythm pattern.
Circle the pattern that you hear.

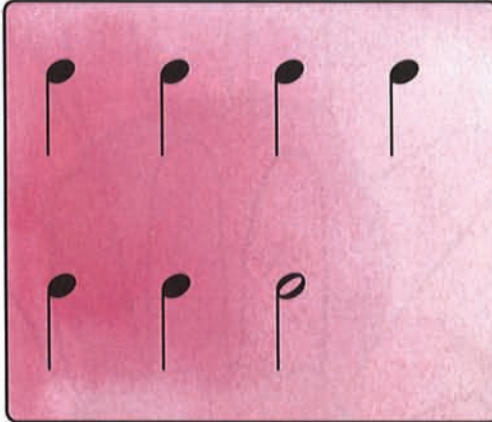
1



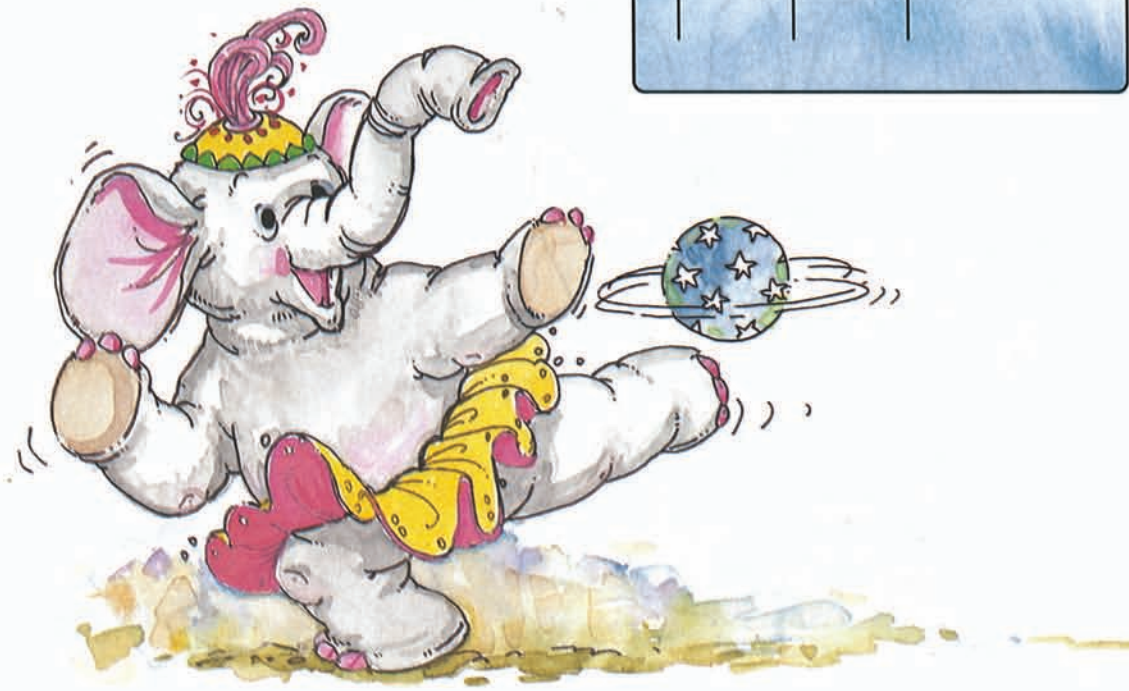
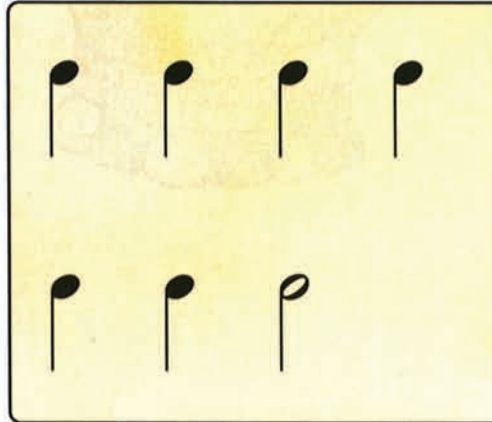
2



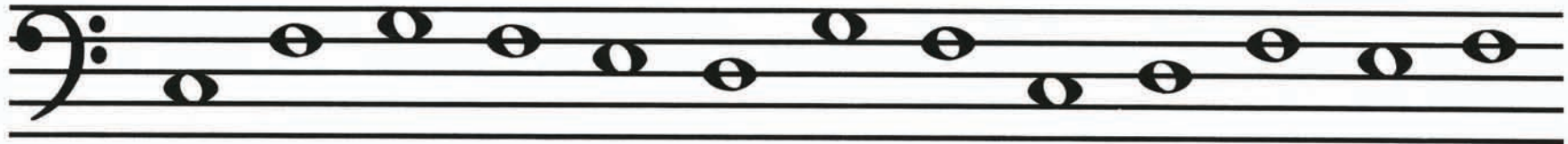
3



4



Bass Clef F
Color each bass clef F **black**.



Review

1. Color the areas containing a C **gray**.
2. Color the areas containing a D **blue**.
3. Color the areas containing an E **brown**.
4. Color the areas containing an F **yellow**.
5. Color the areas containing a G **pink**.
6. Color the areas containing a TREBLE CLEF **orange**.
7. Color the areas containing a BASS CLEF **purple**.
8. Color the areas containing a *forte* (*f*) **green**.
9. Color the areas containing a *piano* (*p*) **black**.
10. Color the areas containing a *mezzo forte* (*mf*) **red**.

