

## ALFRED'S CHALLENGER BAND SERIES

## Cedarwood Holiday

By Mark Williams

Take your students on a musical holiday with this engaging selection for young bands. This festive concert and contest overture features rich harmonies and rhythmic interest that will help make your group sound its very best. From the syncopated *Allegro* of the opening to the lyrical *Andante*, this piece offers many opportunities for developing tone and expression. Highly recommended!

## INSTRUMENTATION

1 – Conductor Score	4 – 1st B♭ Trumpet
10 – Flute	4 – 2nd B♭ Trumpet
2 – Oboe	2 – F Horn
2 – Bassoon	3 – Trombone
6 – 1st B♭ Clarinet	2 – Baritone B.C.
6 – 2nd B♭ Clarinet	2 – Baritone T.C.
2 – B♭ Bass Clarinet	2 – Tuba
2 – 1st E♭ Alto Saxophone	Percussion – 5 players:
2 – 2nd E♭ Alto Saxophone	2 – Mallet Percussion
2 – B♭ Tenor Saxophone	(Xylophone/Bells)
1 – E♭ Baritone Saxophone	5 – Percussion (Snare Drum/ Triangle, Bass Drum, Crash Cymbals/ Suspended Cymbal)
	2 – Timpani (Tambourine)

## WORLD PARTS

available for download from  
[www.alfred.com/worldparts](http://www.alfred.com/worldparts)

E♭ Alto Clarinet  
E♭ Horn  
Trombone in B♭ T.C.  
Trombone in B♭ B.C.  
Euphonium in B♭ B.C.  
Tuba in B♭ T.C.  
Tuba in B♭ B.C.  
Tuba in E♭ T.C.  
Tuba in E♭ B.C.



# Cedarwood Holiday

Mark Williams

CONDUCTOR SCORE

Duration - 3:45

**Allegro** ♩ = 126

Flute/  
Oboe Fls. only [5] %

B♭ Clarinets 1/2

E♭ Alto  
Saxophones 1/2

B♭ Trumpets 1/2

F Horn

Trombone (+T.Sx.)

Baritone  
Tuba

Mallet Percussion (Xylophone/Bells)

Percussion (Snare Drum/Triangle, Bass Drum, Crash Cymbals/Suspended Cymbal)

Timpani (Tambourine)

*f* *mp* *a2*

Tune: F, C

1 2 3 4 5

Fl./  
Ob. (+Ob.)

Cls. 1/2

A. Saxes 1/2

Tpts. 1/2

Hn.

Trb.

Bar./  
Tuba

Mlt. Perc.

Perc.

Timp.

*mf* *a2*

6 7 8 9 10

13

Fl./Ob. *f*

Cls.  $\frac{1}{2}$  *f*

A. Saxes  $\frac{1}{2}$  *f*

Tpts.  $\frac{1}{2}$  *f*

Hn. *f*

Trb. *f*

Bar./Tuba *f*

Mlt. Perc. *f*

Perc. *mf* *f* Cr. Cyms.

Timp. *f*

11 12 13 14 15 16

21

Fl./Ob. *mf* *a2*

Cls.  $\frac{1}{2}$  *mf*

A. Saxes  $\frac{1}{2}$  *mf* *a2*

Tpts.  $\frac{1}{2}$  *mf* *a2*

Hn. *mf*

Trb. *mf* (+T.Sx.)

Bar./Tuba *mf*

Mlt. Perc. *mf*

Perc. *mf* Bells (plastic mallets)

Timp. *mf*

17 18 19 20 21

To Coda ⊕ molto rall.

Fl./Ob. *a2*

Cls. 1/2 *mp*

A. Saxes 1/2 *a2 mp*

Tpts. 1/2 *a2 mp*

Hn. *mp*

Trb. (+T.Sx.) *mp*

Bar./Tuba *mp*

Mlt. Perc. *mp*

Perc. *mp* Sus. Cym. *pp*

Timp. *mp*

22 23 24 25 26

27 Andante ♩ = 80

31 Fl. Solo

Fl./Ob. *mf*

Cls. 1/2 *a2*

A. Saxes 1/2 *a2*

Tpts. 1/2 *a2*

Hn. (+T.Sx.) (-T.Sx.)

Trb. *mp*

Bar./Tuba *mp*

Mlt. Perc.

Perc. *mp* Triangle *mf*

Timp. *mp*

27 28 29 30 31 32

Fl./Ob. *(b)2* *(+Ob.) All* *mp*

Cls.  $\frac{1}{2}$  *a2*

A. Saxes  $\frac{1}{2}$  *a2* *mp*

Tpts.  $\frac{1}{2}$  *mp*

Hn.

Trb. *(+T.Sx.)* *mp* *(+T.Sx.) (b)2*

Bar./Tuba *(+T.Sx.)* *mp*

Mlt. Perc.

Perc. *B.D.* *p*

Timp.

33 34 35 36 37 38

39 Fl. Solo *(+Ob. Solo)* *All* *mf* *mp*

Cls.  $\frac{1}{2}$

A. Saxes  $\frac{1}{2}$

Tpts.  $\frac{1}{2}$

Hn.

Trb.

Bar./Tuba *mp*

Mlt. Perc.

Perc. *Triangle* *mf* *B.D.* *p*

Timp.

39 40 41 42 43 44

47 Poco più mosso ♩ = 88

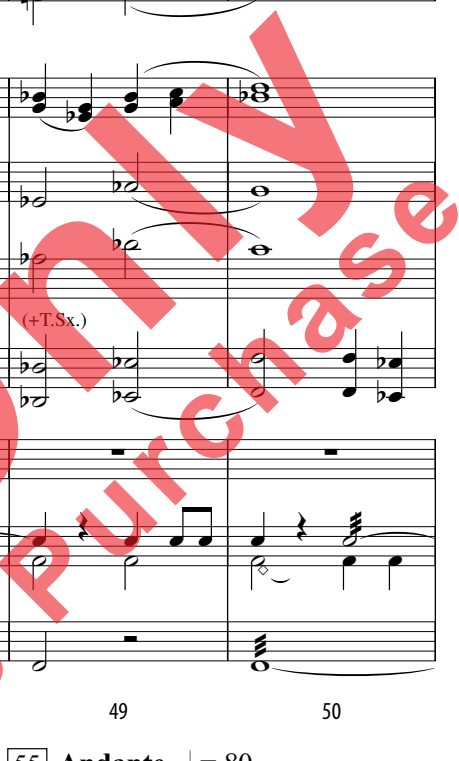
Fl./Ob.  
Cls. 1/2  
A. Saxes 1/2  
Tpts. 1/2  
Hn.  
Trb.  
Bar./Tuba  
Mlt. Perc.  
Perc.  
Timp.

*mf* *a2* *mf* *mf* *mf* *mf* *mf* *mf*

S.D.  
Cr. Cyms.

(+T.Sx.)

45 46 47 48 49 50



55 Andante ♩ = 80

Fl./Ob.  
Cls. 1/2  
A. Saxes 1/2  
Tpts. 1/2  
Hn.  
Trb.  
Bar./Tuba  
Mlt. Perc.  
Perc.  
Timp.

Fl. only  
+Ob.  
*mf* *mp* *mp* *mf* *mf* *mf* *mf* *mf* *mf* *mf* *mf* *mf*

*a2* *a2* *a2* *a2* *a2* *a2* *a2* *a2* *a2* *a2* *a2* *a2*

Sus. Cym.

51 52 *mp* 53 54 *mf* 55 56

Fl./Ob.  $\frac{1}{2}$

Cls.  $\frac{1}{2}$

A. Saxes  $\frac{1}{2}$

Tpts.  $\frac{1}{2}$

Hn.

Trb.

Bar./Tuba

Mlt. Perc.

Perc.

Timp.

57 58 59 60 61

Sus. Cym.

*a2*

Fl./Ob.  $\frac{1}{2}$

Cls.  $\frac{1}{2}$

A. Saxes  $\frac{1}{2}$

Tpts.  $\frac{1}{2}$

Hn.

Trb.

Bar./Tuba

Mlt. Perc.

Perc.

Timp.

62 63 64 65 66

Fl. div. *p* *mp*

Fl. only *mp*

*a2* *p* *mp*

to Xyl.

Tri. *p*

To Tamb.

**Allegro** ♩ = 126

**D.S.  $\frac{3}{4}$  al Coda**

**Coda**

Fl./Ob. *a2*

Cls.  $\frac{1}{2}$  *a2 f p*

A. Saxes  $\frac{1}{2}$  *a2 f p*

Tpts.  $\frac{1}{2}$  *a2 f p*

Hn. *f p*

Trb. *f p*

Bar./Tuba *f p*

Mlt. Perc. *Xyl. b*

Perc. *f p*

Cr. Cyms. *f p*

Timp. *f p*

67 68 69 70

Fl./Ob. *ff* (use alt. F#)

Cls.  $\frac{1}{2}$  *ff*

A. Saxes  $\frac{1}{2}$  *a2 ff*

Tpts.  $\frac{1}{2}$  *a2 ff*

Hn. *ff*

Trb. *ff*

Bar./Tuba *ff*

Mlt. Perc. *ff*

Perc. *ff*

Timp. *ff*

71 72 73 74