

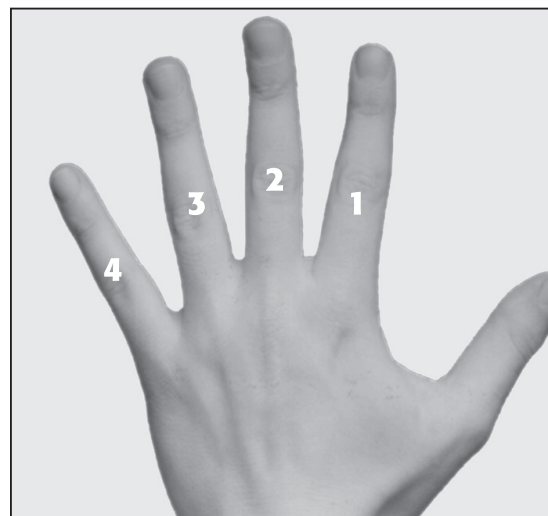
# The Left Hand

## Proper Hand Position

Learning to use your left-hand fingers starts with a good hand position. Place your hand so your thumb rests comfortably in the middle of the back of the neck. Position your fingers on the front of the neck as if you are gently squeezing a ball between them and your thumb. Keep your elbow in and your fingers curved.



**Keep your elbow in and fingers curved.**



**Numbers of the left-hand fingers.**



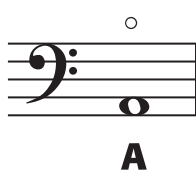
**Position your fingers as if gently squeezing a ball between them and your thumb.**

# Notes on the Third String A

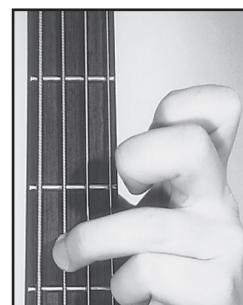
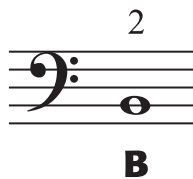
## NOTES YOU'VE LEARNED SO FAR



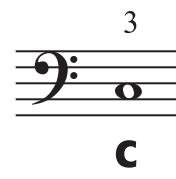
OPEN STRING



2nd FRET



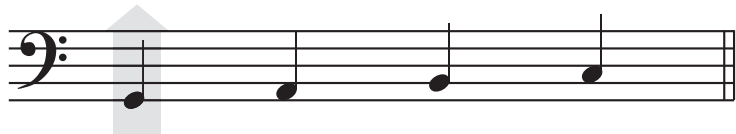
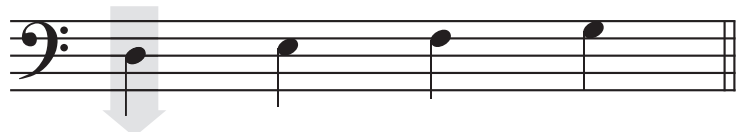
3rd FRET



## Up-Stems & Down-Stems

Until now, all notes have been written with the stems pointing down. To make music look neater, down-stems *and* up-stems are used:

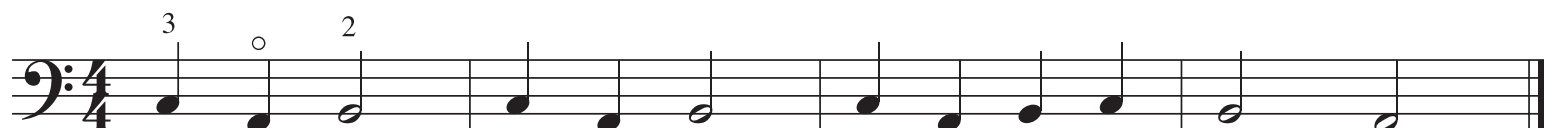
Notes above or on the middle line have stems pointing down.



## A Few New Notes



## Lookin' Up



## Quick Time

CHORDS: D

A

Bm

G

D

A

Bm

G



D

A

Bm

G

D

A

D



When you are fingerpicking and moving quickly from a higher string to a lower string, try using the same finger (*i* or *m*) to play both strings.

## Early Rock with Eighths

CHORDS: F

Dm

B $\flat$ 

C

*i m i i*

F

Dm

B $\flat$ *i i*

F

Dm

B $\flat$ 

C

*i i*

F

C

*i i*

F



## Eightude

CHORDS: B $\flat$ *i m i i*E $\flat$ 

Dm

Gm

F

*i m i i m i m m*B $\flat$ E $\flat$ B $\flat$ 

C

F

B $\flat$ *i i*E $\flat$ 

Edim

F7

*i i*B $\flat$ 

Gm

*i i m i i*

Cm

B $\flat$ 

F

B $\flat$ *i m m*

# Rock Licks in the Keys of G, C & D

## Rock Lick in G No. 1



CHORDS: G

Alt. { 0 2 } 1 2 3 4 Alt. { 0 2 }

T { 0 4 5 6 7 } Alt. { 0 5 }

A

B

## Rock Lick in G No. 2



CHORDS: G

Alt. { 0 2 } 1 2 3 4 1 Alt. { 0 2 }

T { 0 0 4 4 5 5 6 6 } 7 7 4 Alt. { 0 5 }

A

B

## Rock Lick in C



CHORDS: C

1 3 2 4 3 1

T 5 5 7 5 5

A 3 5 5 5

B 3

## Rock Lick in D



CHORDS: D

4 3 3 1

T 0 0 7 6 4 2

A 0 0 0 0 0 0

B 0