

Geysers

Yellowstone National Park was established as the world's first national park in 1872. It was named for the yellow rocks that are found along part of the Yellowstone River. The park covers over 2,000,000 acres and stretches from northwestern Wyoming into Idaho and Montana. The most outstanding natural phenomena are the thousands of displays that compose the world's largest thermal basins. These include mud pots, hot springs, and over 300 geysers.

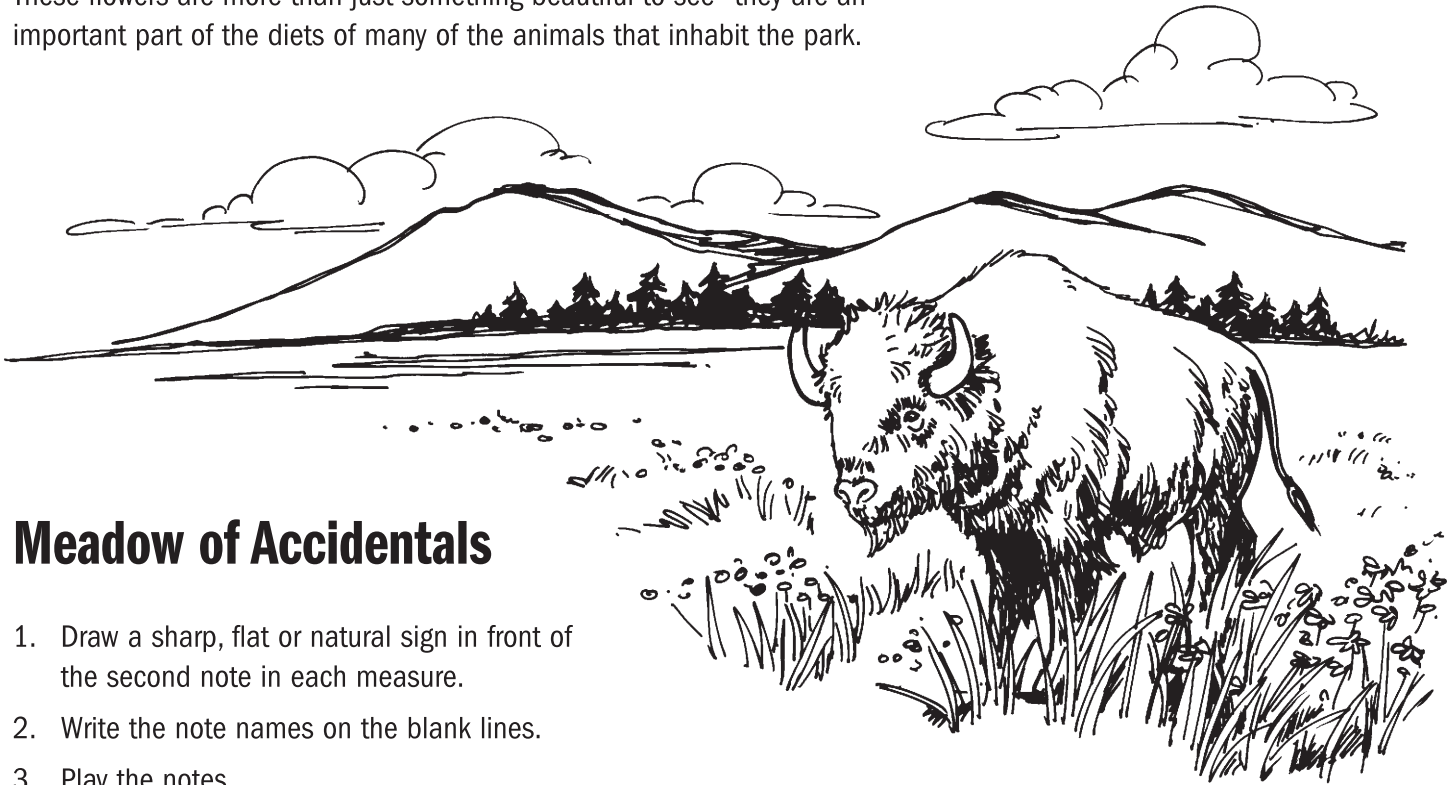
Robert D. and Karen Vandall

Gushing upwards (♩ = ca. 132)

Both hands one octave higher than written throughout

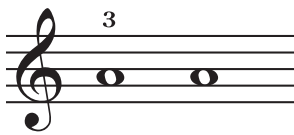
Press damper pedal and hold throughout.

Most of Yellowstone is covered by evergreen forests and mountain meadows. During the summer, the meadows are full of wildflowers. These flowers are more than just something beautiful to see—they are an important part of the diets of many of the animals that inhabit the park.



Meadow of Accidentals

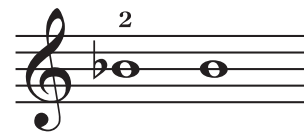
1. Draw a sharp, flat or natural sign in front of the second note in each measure.
2. Write the note names on the blank lines.
3. Play the notes.



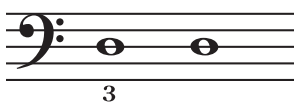
— (flat)



— (sharp)



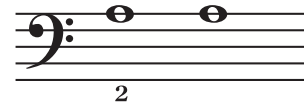
— (natural)



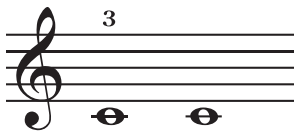
— (sharp)



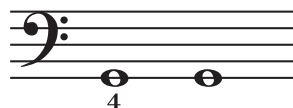
— (natural)



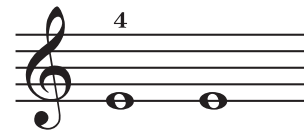
— (flat)



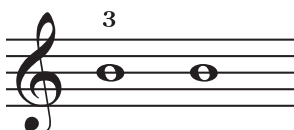
— (sharp)



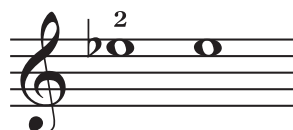
— (sharp)



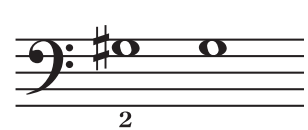
— (flat)



— (flat)



— (natural)



— (natural)