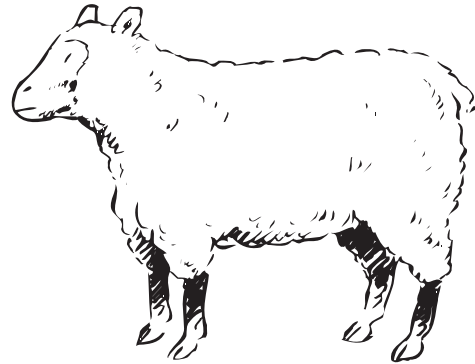


Project 9

Focus: Musical Analysis
Review of Terms



1. Look at the music for *Lost Lamb*.
 - a. Clap the rhythm and count aloud.
 - b. Circle four measures that *Lost Lamb* borrowed from *Mary Had a Little Lamb*.
 - c. Name the two bass-clef line notes used in *Lost Lamb*. ___ ___
Circle them in the music.
 - d. Draw one slur over the first line and one slur over the second line, to make this piece *legato*.
 - e. Then play.

Lost Lamb

Slowly

mp Poor sad mixed up lamb could - n't find her way to - day.

5

Ma - ry took her home a - gain; there she'll stay.

2. Unscramble the letters to spell the musical term for each definition:
 - a. Smooth and connected G E T L O A _____
 - b. Soft N I P A O _____
 - c. Detached, separated O C T A S C A T _____

Project 15

Focus: Bass Clef Spaces
Flat
Natural

Bass Clef Spaces Flat Natural

1. Draw a line to connect each flatted note on the staff to its matching keyboard.

2. Add a natural sign before each E that is on beat 2. Then play *Boogie Beat*.

Boogie Beat

Steadily

mf Boo - gie beat, boo - gie beat, dance it with those boo - gie feet.

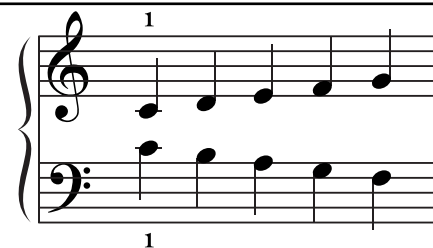
3. Cross out each incorrect bass-clef space.

Example

Project 35

Focus: Middle C Position
Ear Patterns

Middle C Position:



1. Play *Middle C Song*.
Which finger number shares Middle C? ____

Middle C Song

Steadily

5

2. Here are the beginnings of three tunes that you have studied.
Play each example and draw a line to its correct title.

- a. *Mary Had a Little Lamb*
- b. *Yankee Doodle*
- c. *Twinkle, Twinkle Little Star*