



Fun Zone A Visit to Yosemite

Fill in the blanks with note names to spell words about sights in Yosemite National Park.



1. V _ _ L L _ _ Y



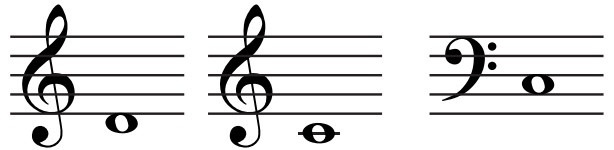
2. _ _ _ R



3. _ _ _ R



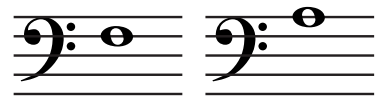
4. L _ _ K _ _



5. W O O _ _ H U _ _ K



6. _ _ _ L _ _



7. _ _ _ L L S

Learning Link

Yosemite National Park, located in central California, is a great wilderness. It is a spectacular area of mountains and valleys that includes numerous trails, beautiful lakes, rushing streams, waterfalls, mountain peaks and giant Sequoia trees. Many kinds of animals and birds live there. A number of rock masses rise from the valley floor, including the famous Half Dome and El Capitan—both favorites of experienced rock climbers.

Fun Zone Rhythm Review

1. **Ice Cream Cones** Draw a line from each flavor to its correct time signature on the cone. Say the flavors in the correct rhythm.



mint choc-'late chip

rock - y road

cof - fee al - mond fudge

pep - per - mint stick

choc - 'late

Ne - a - pol - i - tan

Learning Link

No one really knows when the first **cone** was combined with **ice cream**. Some say it can be traced back to England in the 1700s. In the United States, a patent was issued in 1904 for one type of cone. This ice cream and cone combination first became popular at the 1904 St. Louis World's Fair. The Fair included about 50 ice cream stands and a large number of waffle shops. It did not take long for them to get together to produce a refreshing snack that is now popular throughout the world.

2. **The Mystery of the Un-named Notes:** Read the clue for each note. Then draw the note, write how many counts it gets in $\frac{1}{4}$ and/or $\frac{3}{4}$ time, and name it.

Clues

Draw the note.

How many counts?

Circle its name.

- This note is oval-shaped, white inside, and has a stem.



- whole note
- half note

- This note has a black oval and a stem.



- half note
- quarter note

- This note is oval-shaped, white inside, and has a stem and a dot.



- dotted half note
- quarter note

- This note is oval-shaped and white inside.



- half note
- whole note

New Notes B and D

1. Connect the notes to the matching letters.



C D B



D C B



B C D



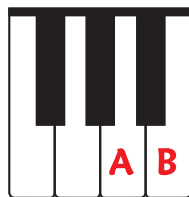
B D C

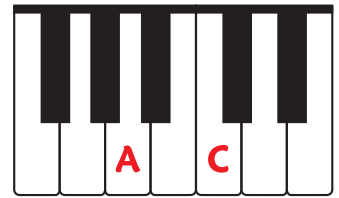
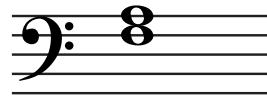
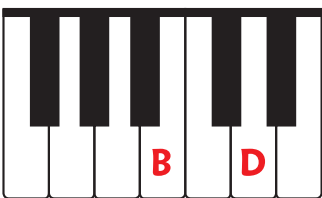
Learning Link

Ants are insects that live in groups called colonies. Colonies may have anywhere from a dozen to millions of ants, including one or more queens who lay eggs.

Most members of the colony are workers who build the nest, search for food and fight enemies. Ants can be pests in homes or at picnics. However, they play an important role in nature by eating harmful insects.

2. Draw a ✓ under all the 2nds on the staves and keyboards. Draw an X under all the 3rds.





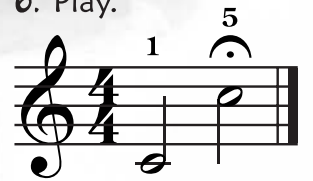


Fun Zone Visit the Pyramids

Play each example as you follow the desert trail up to the pyramids.



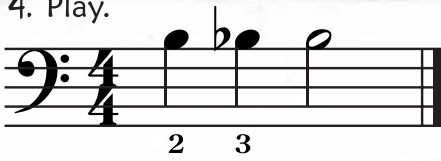
6. Play.



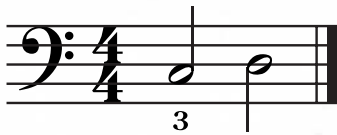
Lift hand—
don't stretch

5. Play a RH harmonic 5th with finger 1 on Middle C.

4. Play.



3. Play.



2. Play Treble G with RH finger 2, then play up a half step.

1. Play on Bass G.



Begin Here