

TABLE OF CONTENTS

About the Author	3
Introduction	4
Chapter 1—A Review of the Basics	5
Reading Music.....	5
Notes and Rests	6
Time Signatures.....	6
Slap & Pop Notation	9
Chapter 2—An Overview of the Basic Techniques	10
The Slap	10
The Pop	11
Hammer-ons and Pull-offs.....	12
Muted, or Dead Notes	13
Slides.....	13
Chapter 3—The Slap	14
Slapping Exercises on Open Strings	14
One-Bar Slapping Licks.....	16
Two-Bar Slapping Licks	17
Four-Bar Slapping Grooves.....	18
Chapter 4—The Pop	19
Popping Exercises on Open Strings	19
One-Bar Slap & Pop Licks.....	20
Two-Bar Slap & Pop Licks	21
Four-Bar Slap & Pop Grooves.....	22
Chapter 5—Hammer-ons and Pull-offs	28
Hammer-ons	28
Pull-offs.....	28
One-Bar Licks with Hammer-ons, Pull-offs and Slides	29
Two-Bar Licks with Hammer-ons, Pull-offs and Slides.....	30
Four-Bar Grooves with Hammer-ons, Pull-offs and Slides	31
Chapter 6—Advanced Techniques	38
Double Pops.....	38
Popped Double Stops	38
Double Slides.....	38
Four-Bar Grooves with Double Pops, Popped Double Stops and Double Slides	39
Chapter 7—Library of Funk Bass Lines	41
Final Word	47



1

Online audio is included with this book. This recording can make learning with the book easier and more enjoyable. The symbol shown at the left appears next to every example that is on the recording. Use the audio tracks to help ensure that you're capturing the feel of the examples and interpreting the rhythms correctly. The numeral below the symbol corresponds directly to the track number. Track 1 provides tuning notes for your bass.

CHAPTER 1

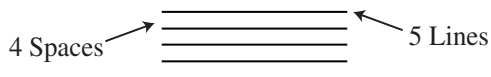
A REVIEW OF THE BASICS

This chapter is a review of basic materials and concepts that are covered in *Beginning Electric Bass*, also Alfred. If you already read music and tablature, know how to find every note on the bass and have completed *Beginning Electric Bass*, you can skip this chapter and begin with Chapter 2 on page 10.


READING MUSIC

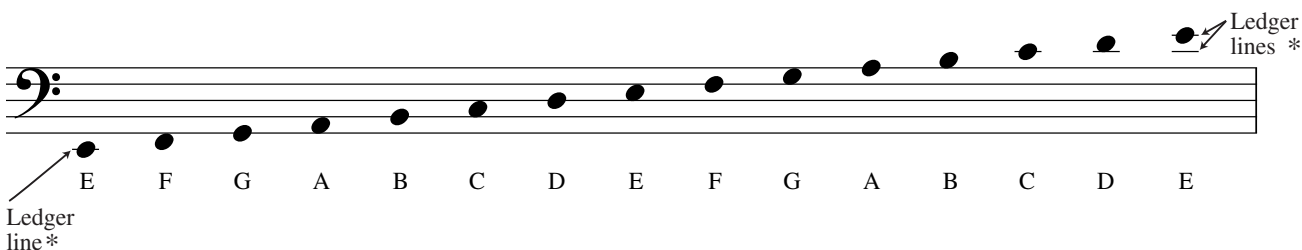
THE STAFF

Music is written on the *staff*, which consists of five lines and four spaces.



THE BASS CLEF

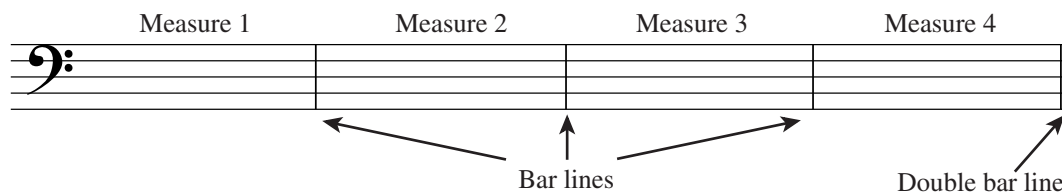
This sign  is the *bass clef*. The dots surround the 4th line of the staff, which is designated as the note "F." For that reason, this clef is often called the *F clef*. Most electric bass music is written in the bass clef. The notes on the bass clef staff are as follows:



*Ledger lines are used to show notes that are too high or too low for the staff.

MEASURES AND BAR LINES

Bar lines divide the staff into *measures*. Each measure contains an equal number of *beats*. A beat is the basic unit of musical time. The *double bar line* indicates the end of a section or example.



SLAP & POP NOTATION

Several symbols are used to indicate the different types of slap & pop techniques in both standard music notation and TAB. The following key shows the symbols for the various techniques used in this book.

S	=	Slap
P	=	Pop
H	=	Hammer-on
PO	=	Pull-off
SL	=	Slide
×	=	Muted note
$\frac{P}{P}$	=	Popped Double Stop
$\frac{SL}{SL}$	=	Double slide

The example below is a typical two-bar slap & pop bass line demonstrating some of the most common techniques and their notation.

The example shows a two-bar bass line in 4/4 time, featuring various slap and pop techniques. The notation is presented in standard musical notation (bass clef, key of D major) and TAB (T, A, B strings).

Bar 1:

- Measure 1: Slap (S) on D4, Hammer-on (H) on E4, Slap (S) on F#4, Pop (P) on G4, Slap (S) on A4, Pop (P) on B4, Pull-off (PO) from B4 to A4.
- Measure 2: Slap (S) on D4, Slide (SL) from D4 to E4, Slap (S) on F#4, Popped Double Stop (P/P) on G4 and A4, Slap (S) on B4, Slap (S) on D5, Slap (S) on F#5, Slap (S) on A5.

TAB:

- Measure 1: 1 (D), 3 (E), × (F#), 1 (G), × (A), 3 (B), 1 (A).
- Measure 2: 1 (D), 1 (E), × (F#), × (G), 1 (A), 2 (B), 3 (D), 0 (F#).

That's all the review and preparation we have space for. If you need more basic information about reading music for and playing the electric bass, read *Beginning Electric Bass*, also published by Alfred.