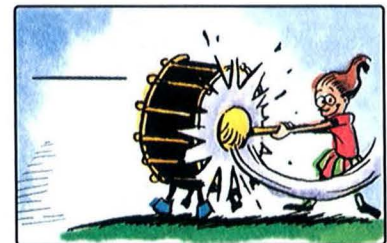
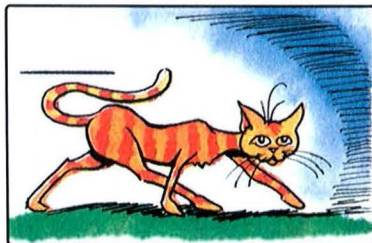
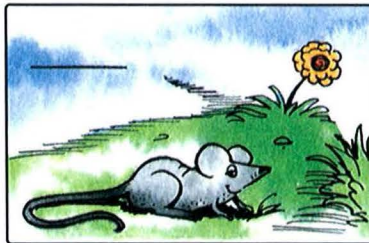


Dynamics . . are signs showing how **LOUD** or **SOFT** to play.

f (*forte*) = LOUD

p (*piano*) = SOFT

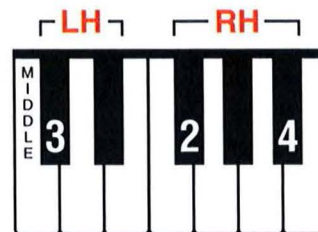
1. Some things sound ***f***, some ***p***. Which sign suits each of these pictures best?
Write the correct dynamic sign on the line in each picture.



The Bugler and the Echo

Assign with pages 14–15.

2. Read the words under the 1st line of music.
Write the dynamic sign you think is most correct
in the box at the beginning.
3. Read the words under the 2nd line of music.
Write the dynamic sign you think is most correct
in the box at the beginning.

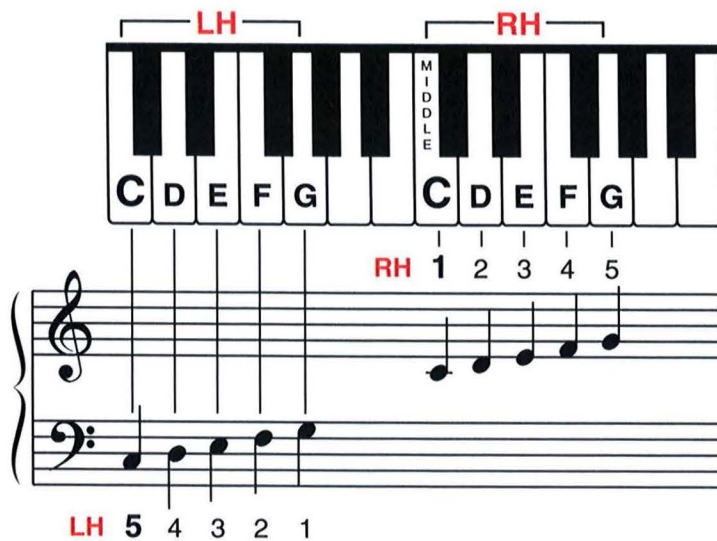



RH 2 4 2 | RH 4 2 | RH 2 4 2 | RH 2
 Loud - ly the bu - gler sounds his re - frain, "Tah - tah!"
 LH 3 3 3


RH 2 4 2 | RH 4 2 | RH 2 4 2 | RH 2
 Soft - ly the ech - o sounds it a - gain, "Tah - tah!"
 LH 3 3 3

4. Play *THE BUGLER AND THE ECHO*. Carefully observe the dynamics.

C Position on the Grand Staff

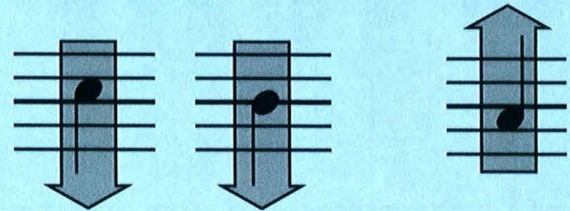


RH plays notes in the TREBLE STAFF. 

LH plays notes in the BASS STAFF. 

Notes ABOVE or ON the middle line have stems pointing DOWN.

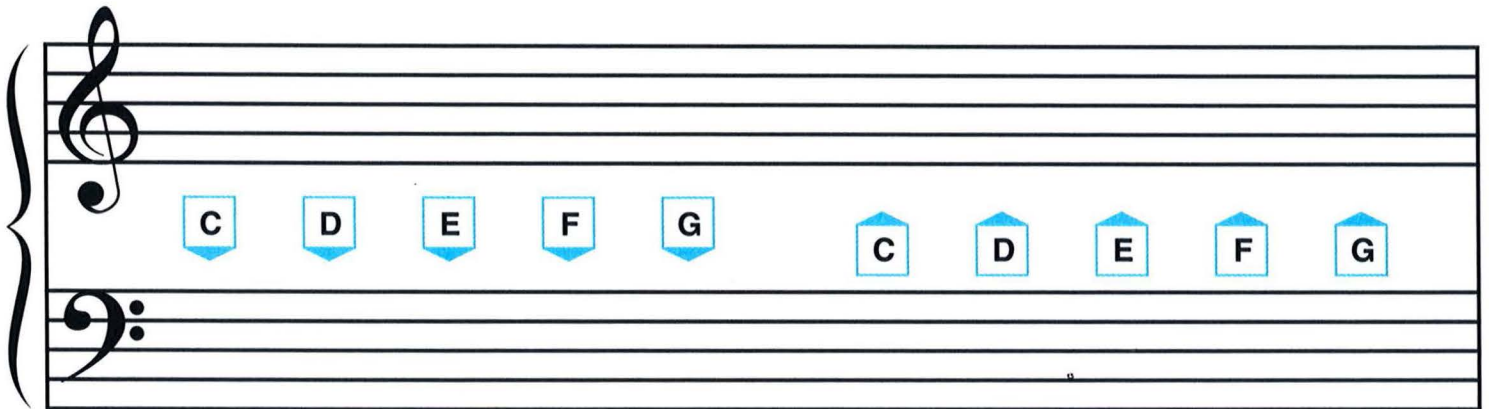
Notes BELOW the middle line have stems pointing UP.



1. Write the LH notes in the BASS staff under the squares. Use QUARTER NOTES. Turn the stem of the C UP. Turn the stems of the D E F & G DOWN.

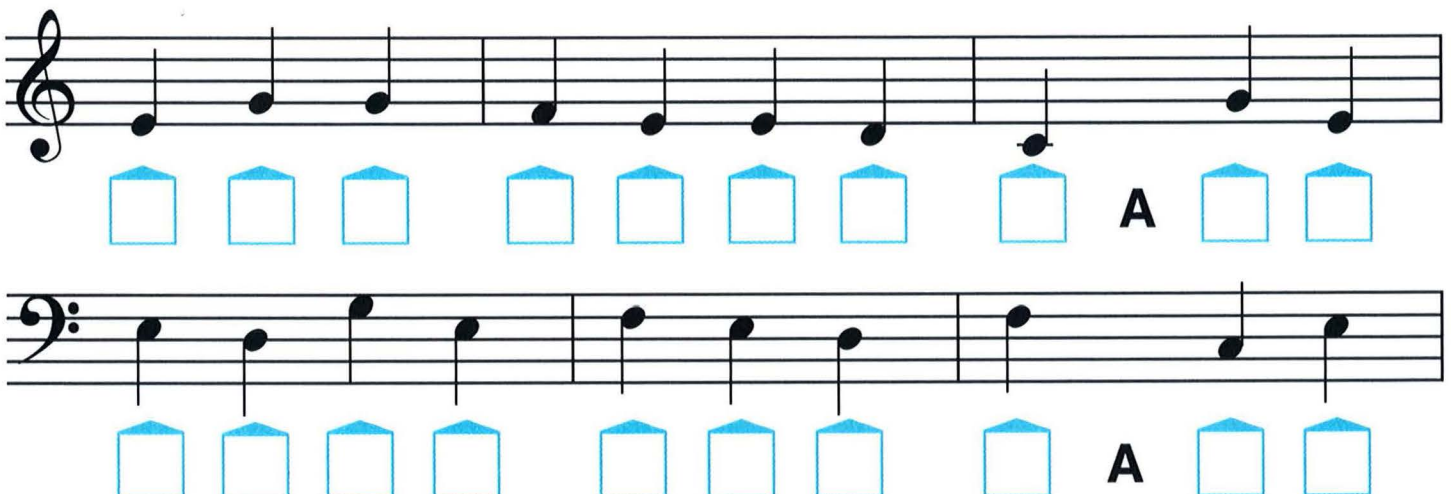


2. Write the RH notes in the TREBLE staff over the squares. Use QUARTER NOTES. Turn all the stems UP.



Spelling Game

3. Write the name of each note in the square below it.
The letters in each group of squares will spell a familiar word.



Flats

The **FLAT SIGN** \flat before a note means play the next key to the left, whether black or white.

1. Make some FLAT SIGNS:

First, draw one vertical line.

Then add the heavier curved line.

Draw 4 flat signs here.



--	--	--	--

2. Write the names of the \flat keys in the boxes:

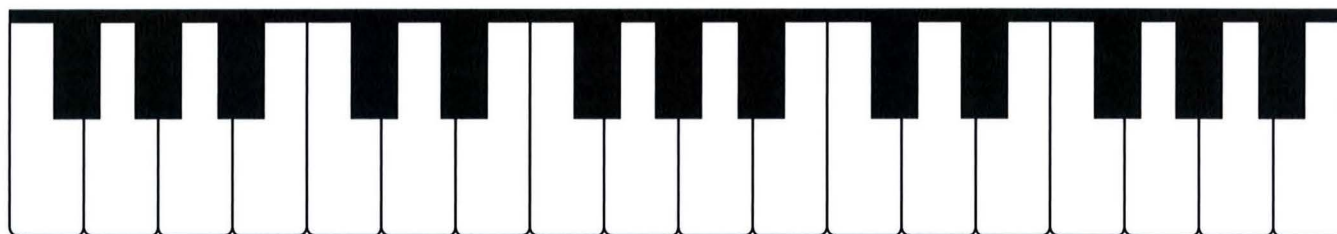
\flat

\flat

\flat

\flat

\flat

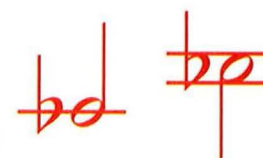


3. Change each of these notes into a flat note. Play each with RH 3 or LH 3.

Be sure to **CENTER** the flat sign on the line or space of the note to be flatted:



Place the flat **BEFORE** the note:



4. Can you read this motto?

ALWAYS



AND YOU'LL NEVER



!