

for Tom Goeman

SIMPLE SONG OF LOVE

(Simple Gifts *and* He's Got the Whole World in His Hands)

for 2-part any combination voices with descant,
accompanied, with opt. flute*

TRADITIONAL

Arranged by JEAN ANNE SHAFFERMAN

Moderately (♩ = ca. 104-108)

FLUTE
(optional)

Moderately (♩ = ca. 104-108)

ACCOMP.

mf (play r.h. notes in brackets only in absence of flute)

UNISON VOICES

He's got the whole world in His hands, He's got the

(r.h. play)

whole world in His hands, He's got the whole world

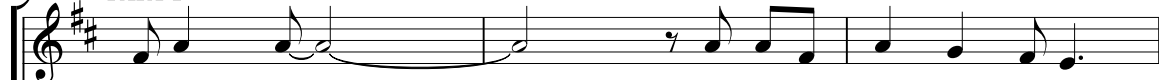
* Flute part may be found on page 11.

A full-performance/accompaniment compact disc is available separately, No. 20995.

Copyright © MMII by Alfred Publishing Co., Inc.
All rights reserved. Printed in USA.

THE CCLI LICENSE DOES NOT GRANT PERMISSION TO PHOTOCOPY THIS MUSIC.

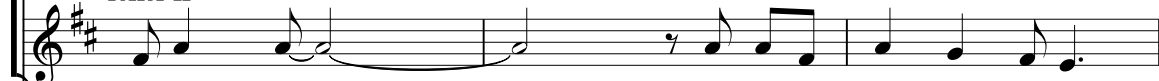
10 PART I



in His hands, _____

He's got the whole world in His

PART II



in His hands, _____

He's got the whole world in His



13

14

mp

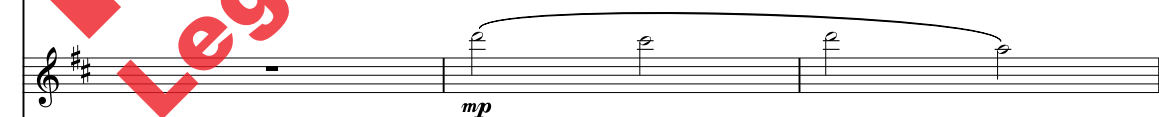
hands.

- le - lu - ia,



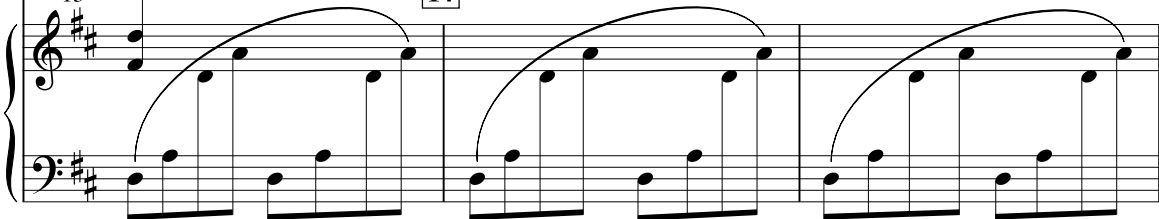
hands.

He's got love for my brothers in His hands, - He's got

*mp*

13

14



16

al - le - lu - ia. Al - le -

love for my sis-ters in His hands, - He's got love for ev-'ry-bod-y

16

19

lu - ia, He's got the whole world in His

in His hands, He's got the whole world in His

19

mf

mf

22

hands.

hands.

22

(play r.h. notes in brackets only in absence of flute)

25

(r.h. play)

28

tr

31

mf

Sing, sing in per-fect har-mo-ny, a sim-ple song of love for

mf

Sing, sing in per-fect har-mo - ny, a sim-ple song of

mp

31

34

you and for me.

To sing, sing will

love for you and for me.

To sing, sing, sing will

34

8va

37

be our de-light, Till by sing-ing, sing-ing we come 'round right.

37

be our de-light, Till by sing-ing, sing-ing we come 'round right.

mp *tr* *mf*

37

41

mf

'Tis a

41

5

20994

44 *DESCANT (both times)

mp

Al - le - lu - ia, al - le -

PART I (2nd time only)

mp

Al - le - lu - ia, al - le -

PART II (both times)

gift to be sim-ple, 'Tis a gift to be free, 'Tis a sim-ple song of

mp

44

47

lu - ia. Al - le - lu - ia,

mf

lu - ia; And when we find our-selves in the place just right,

love for you and me; And when we find our-selves in the place just right,

47

*A few high voices; or, director may divide choir into three equal parts.

50 *mf* 1. we'll sing a song of love and light.

1. we'll sing a song of love and

1. we'll sing to - geth - er in love and de-light.

50 1. *mf*

53 1. *mf* 'Tis a

53 *tr*

53

57 2. 58 *f* light. A sim-ple

2. *f* light. A sim-ple

2. love and de - light. A sim-ple

2. *f* *tr*

57 2. 58 *f*

61 song of love we sing!

61 song of love we sing!

61 song of love we sing!

f

61

(Simple Gifts *and* He's Got the Whole World in His Hands)

TRADITIONAL

Arranged by **JEAN ANNE SHAFFERMAN**

Moderately (♩ = ca. 104-108)

Moderately (♩ = ca. 104-108)

5 *mf* 9 14 *mp* 18 22 *mf* 23 27 31 *mp* 32 3 39 *mp* *mf* 44 *mp* 50 53 *mf* 55 58 59 *f*

Copyright © MMII by Alfred Publishing Co., Inc.
All rights reserved. Printed in USA.

THE CCLI LICENSE DOES NOT GRANT PERMISSION TO PHOTOCOPY THIS MUSIC.

Simple Song of Love is a partner song that incorporates two traditional melodies, the Shaker tune *Simple Gifts* and the spiritual *He's Got the Whole World in His Hands*. It may be performed by both treble and mixed choirs, either in two parts with descant or in three equal parts. It is appropriate for singers of all ages in both church and school choirs. An orchestrated full-performance/accompaniment CD is available separately, No. 20995.

For performance by church choirs, suggested corresponding scripture readings include Psalm 136, John 3: 16, 13: 34-35 & 14: 19-24, 1 Corinthians 13: 1-13, 1 Thessalonians 4: 9-12 and 1 John 2: 3-5. One basic homiletical theme: God is love.

Jean Anne Shafferman is Director of Church Choral Publications for Alfred Publishing Company. A graduate of the University of Kentucky with a B.M.E. in vocal music education and an M.A. in music theory, she is active as a church musician, clinician, and composer and has served as the Eastern Division Music in Worship Chairperson for the American Choral Director's Association.

