

PREPARE YE!

for 2-part any combination voices, accompanied,
with opt. soloist and percussion*

Words adapted from scripture by
JEAN ANNE SHAFFERMAN

Traditional Jamaican Folk Song
Arranged by **ANNA LAURA PAGE**
and **JEAN ANNE SHAFFERMAN**

With energy! (♩ = ca. 126)

ACCOMP. (+ perc.) *mf*

9 1st time: SOLO (opt. PART I)
2nd time: ALL VOICES

PART I *mf*

Pre-pare— ye the way of God, a path— in the

PART II *mf*

Pre-pare— ye the way of God, a path— in the

* Also available for S.A.T.B. voices, No. 20946.

Parts for claves and maracas, No. 20949, and a full-performance/accompaniment compact disc, No. 20948, are available separately.

Copyright © MMII by Alfred Publishing Co., Inc.
All rights reserved. Printed in USA.

THE CCLI LICENSE DOES NOT GRANT PERMISSION TO PHOTOCOPY THIS MUSIC.

12

wil - der - ness, a high - way in des - ert sand!

wil - der - ness, a high - way in des - ert sand!

15

O, pre-pare_ ye the way!

O, pre-pare_ ye the way! Soon the Son_ will come,

(- perc.) (+ perc.)

17

18

mf

turn the dark - est night in - to broad_ day-light!

shine on ev - 'ry-one, dark night,_ day - light!_

21

ho - ly bless - ed One. O, pre-pare__ ye the

Soon the Son__ will come, ho - ly.____ O, pre-pare__ ye the

(-perc.)

24

way!

way!

(+ perc.)

27

29 *mf*

A voice__ in the

mp

Doo doo__

mp

30

wil - der - ness is cry - ing, "Your sin con - fess!"

doo doo doo doo doo doo

33

You bet - ter do as it says! O, pre-pare ye the

doo doo doo doo O, pre-pare ye the

mf (- perc.)

36

way!

way! Soon the Son will come, shine on ev - 'ry-one,

(+ perc.)

39 *mf*

turn the dark - est night in - to broad - day-light!

dark night, - day - light! - Soon the Son - will come,

42

ho - ly bless - ed One. O, pre-pare - ye the way!

ho - ly. - O, pre-pare - ye the way!

(- perc.) (+ perc.)

45

49

f

Al - le - lu - ia! Al - le -

PART I *mf-f*

The val - leys are ech - o - ing the news_ of the

PART II *mf-f*

The val - leys are ech - o - ing the news_ of the

53 *mf-f* (+ perc.)

56

lu - ia! Al - le - lu - ia!

ti - ny King, the Sav - ior, the Prom - ised One!

ti - ny King, the Sav - ior, the Prom - ised One!

56

59 61 *mp cresc. poco a poco*

O, pre-pare — ye the way! Soon the

O, pre-pare — ye the way! *mp cresc. poco a poco*
 Soon the Son — will come,

O, pre-pare — ye the way! *mp cresc. poco a poco*
 Soon the Son — will come.

59 61

(- perc.) (2nd time) (- perc.)
mp cresc. poco a poco

62 *mf*

night will turn to day - light! —

mf

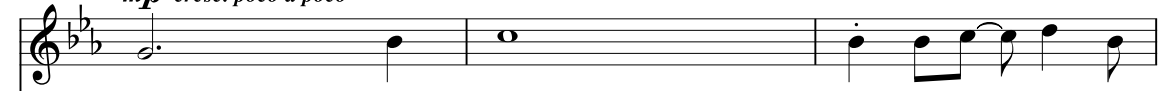
shine on ev-er-y-one, turn the dark - est night in - to broad — day-light!

mf

shine, shine, — dark night, — day - light! —

62 *mf*

65 *mp cresc. poco a poco*



Soon He'll come. O, pre-pare — ye the

mp cresc. poco a poco



Soon the Son — will come, ho - ly bless - ed One. O, pre-pare — ye the

mp cresc. poco a poco



Soon the Son — will come, ho - ly. — O, pre-pare — ye the

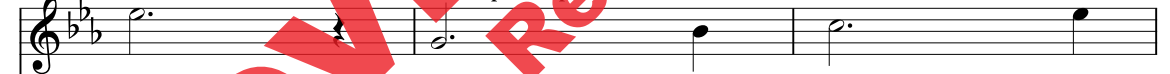
65

mp cresc. poco a poco



68 *mf*

69 *cresc. poco a poco*



way! Soon the night will

mf cresc. poco a poco



way! Soon the Son — will come, shine on ev - 'ry-one,

mf cresc. poco a poco



way! Soon the Son — will come, shine, shine, —

68

69

mf (+ perc.) *cresc. poco a poco*



71 *f* *mf cresc. poco a poco*

turn to day - light!_ Soon He'll

turn the dark - est night in - to broad_ day-light! Soon the Son_ will come,

dark night,_ day - light!_ Soon the Son_ will come,

71 *f* *mf cresc. poco a poco*

74 *f*

come. O, pre-pare_ ye the way!

ho - ly bless - ed One. O, pre-pare_ ye the way!

ho - ly. O, pre-pare_ ye the way!

74 (- perc.) *f* (+ perc.)

77

Empty musical staff with treble clef and key signature of two flats.

Musical staff with treble clef, key signature of two flats, and lyrics: O, pre-pare__ ye the way!

Musical staff with treble clef, key signature of two flats, and lyrics: O, pre-pare__ ye the

Piano accompaniment for measures 77-79. Includes dynamic markings *mf* and *mf*, and performance instructions (- perc.) and (+ perc.).

77

80

Empty musical staff with treble clef and key signature of two flats.

Musical staff with treble clef, key signature of two flats, and lyrics: way!

Piano accompaniment for measures 80-82. Includes dynamic markings *mp* and *sfz*, and performance instructions (+ perc.) and (- perc.).

80

Isaiah 40: 3-5

*“The voice of one crying in the wilderness:
 ‘Prepare ye the way of the Lord;
 Make straight in the desert a highway for our God.
 Every valley shall be exalted and every mountain and hill made low;
 The crooked places shall be made straight and the rough places smooth;
 Then the glory of the Lord shall be revealed, and all people shall see it together:
 For the mouth of the Lord has spoken it.’”*

Prepare Ye! is an energetic Advent anthem whose melody is based upon a traditional Jamaican folk hymn. To this melody the arrangers have added a new text inspired by several scriptures, especially Isaiah 40: 3-5 and Mark 1: 22-23. Additional corresponding scripture readings include Isaiah 7: 13-14 & 9: 6, Matthew 1: 22-23 and John 1: 25-27. One basic homiletical theme is preparing, through prayer and worship, for the coming of the Son of God, who is the Lord of Light.

Repetition is a key element in this lively anthem. Contrast repeated sections through the use of a soloist (as marked) or small sections of the choir in call-and-response with the whole choir. Percussion accompaniment adds a special touch. A score for claves and maracas, No. 20949, and a full-performance/accompaniment compact disc recording, No. 20948, are available separately.

Treble and mixed choirs will enjoy this edition for 2-part any combination voices. When performed by mixed choirs, the following options are recommended.

<u>Option 1</u>	<u>Option 2</u>
Part I: Women	Part I: Sopranos & Tenors
Part II: Men	Part II: Altos & Basses

Jean Anne Shafferman is Director of Church Choral Publications for Alfred Publishing Company. A graduate of the University of Kentucky with a B.M.E. in vocal music education and an M.A. in music theory, she is active as a church musician, clinician and composer and has served as the Eastern Division Music in Worship Chairperson for the American Choral Directors' Association.

Anna Laura Page is Handbell Editor for Alfred Publishing Company. She received her B.M.E. in vocal music education and M.M. in music theory from the University of Kentucky. Active as a composer, clinician and organ recitalist, she has served on the Music Committee of the Southern Baptist Hymnal Committee and has received the ASCAP Standards Award annually for the past several years. Ms. Page currently resides in Sherman, Texas, where her husband, Oscar, is president of Austin College.

