

Grab a Partner!

Includes
Reproducible
Student Song
Sheets and
Staging
Suggestions

Twelve Terrific Partner Songs for Young Singers

Arranged, with new words and music,

by Sally K. Albrecht and Jay Althouse

TITLE	Full Score	Reproducible Student Pages
1. A BROADWAY SONG.....	2	40
(with Give My Regards to Broadway)		
2. WHICH BALL GAME?.....	6	42
(with Take Me Out to the Ball Game)		
3. SING OF THE SPRING.....	10	44
(with Now Is the Month of Maying)		
4. HOW I LOVE MY AMERICA.....	12	46
(with America, the Beautiful)		
5. 'ROUND THE MOUNTAIN	15	48
(with She'll Be Comin' 'Round the Mountain)		
6. ANGELS WATCHIN'	18.....	50
(with All Night, All Day)		
7. GET THAT FLY!	20.....	52
(with Shoo, Fly)		
8. COME BY HERE	24.....	54
(with Kum Ba Ya)		
9. DANCE AROUND THE ROOM	26.....	55
(with Zum Gali Gali)		
10. GETTIN' READY FOR SANTA CLAUS	31.....	58
(with Up on the Housetop)		
11. HEAVENLY PEACE	34	60
(with Silent Night)		
12. GOIN' TO THE RACES	36.....	62
(with Camptown Races)		

©MMI by Alfred Publishing Co., Inc.
All Rights Reserved. Printed in USA.

Cover illustration by Charles Grace
Photography by Scott Moody



ISBN 0-7390-1838-8 (Book)
ISBN 0-7390-1839-6 (CD)
ISBN 0-7390-1840-X (Book/CD Kit)

For photographs and explanations of movement ideas, see Sally's books
CHORAL MUSIC IN MOTION, Volume 1 (Alfred #02-102) and Volume 2 (Alfred #02-107).

**NOTE: The purchase of this book carries with it the right to photocopy pages 40-63 only.
Limited to one school only. NOT FOR RESALE.**

1. A BROADWAY SONG

(Give My Regards to Broadway)

Arranged, with new
words and music, by
SALLY K. ALBRECHT
and **JAY ALTHOUSE**

by **GEORGE M. COHAN**

Broadway 2-beat (♩ = ca. 108)

Turning to L, mime holding hat brim w/R hand to L of face (Divide singers into 4 groups)

Group 1

Group 2

Group 3

Group 4

G/D

C[#]7

PIANO

Lower "hat" to audience

Group 4

Group 3

Group 2

Group 1

Am⁷

G/B

C⁶

C[#]7

D

1st time: PART I only

2nd time: PART II only

3rd time: Sing both parts

9

R fist to chest

Pan flat R palm across from L to R

PART I *f*

Give my re - gards to Broad - way. Re -

Shake jazz hands up from shoulders

Conduct 4 pattern

PART II *f*

Lift up the cur - tain, strike up the band.

G

G/B

Gdim/Bb

Am⁷

D⁷

2. WHICH BALL GAME?

(Take Me Out to the Ball Game)

Arranged, with new
words and music, by
SALLY K. ALBRECHT
and **JAY ALTHOUSE**

by **JACK NORWORTH**
and **ALBERT VON TILZER**

Spirited waltz (♩ = ca. 176)

Dip sway to R and L (opt. hook up elbows)*

PIANO

f

E♭ Edim⁷ B♭/F G⁷

The piano introduction is in 3/4 time, starting with a forte (f) dynamic. It features a series of chords: E♭, Edim⁷, B♭/F, and G⁷. The melody is in the right hand, and the bass line is in the left hand.

5 C⁷ F⁷ B♭ N. C.

The piano continuation starts with a measure marked '5' and a C⁷ chord. It continues with F⁷, B♭, and a final measure marked 'N. C.' (No Chord). The melody is in the right hand, and the bass line is in the left hand.

1st time: PART I only
2nd time: PART II only
3rd time: sing both parts

Hold "bat" over R shoulder

Swing "bat" to L

Mime "crowd"

PART I

f

Take me out to the ball game. Take me

PART II

Hold "football" over R shoulder

Throw "pass" across to L

Mime "crowd"

Oh, how I love a foot - ball game. I

B♭

F⁷

B♭

The piano accompaniment for the vocal parts is in 3/4 time. It features a series of chords: B♭, F⁷, and B♭. The melody is in the right hand, and the bass line is in the left hand.

* Dress up: 1/2 in baseball T-shirts and hats, 1/2 in football. Add penants, pom poms, etc.

1. A BROADWAY SONG

(Give My Regards to Broadway)

Arranged, with new
words and music, by
SALLY K. ALBRECHT
and **JAY ALTHOUSE**

by **GEORGE M. COHAN**

Broadway 2-beat (♩ = ca. 108)

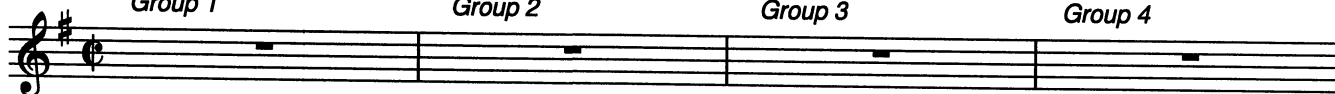
Turning to L, mime holding hat brim w/R hand to L of face (Divide singers into 4 groups)

Group 1

Group 2

Group 3

Group 4



Lower "hat" to audience

Group 4

Group 3

Group 2

Group 1

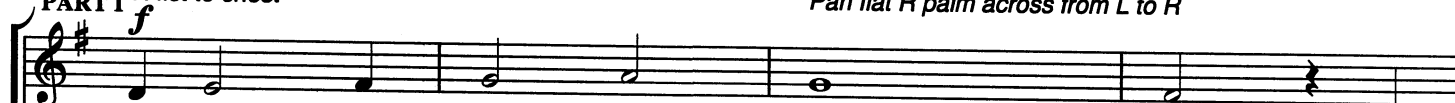


9

1st time: PART I only, 2nd time: PART II only, 3rd time: Sing both parts

R fist to chest

Pan flat R palm across from L to R



Give my re - gards to Broad - way. Re -

PART II

Shake jazz hands up from shoulders

Conduct 4 pattern



Lift up the cur - tain, strike up the band.

13

L fist to chest

Pan flat L palms across from R to L

17

Low bounce 8x



mem - ber me to Her - ald Square. Tell all the

Pop clap over L shoulder

Tilt clap

Low bounce 8x



Turn on the spot - light, give us a hand. We're off for

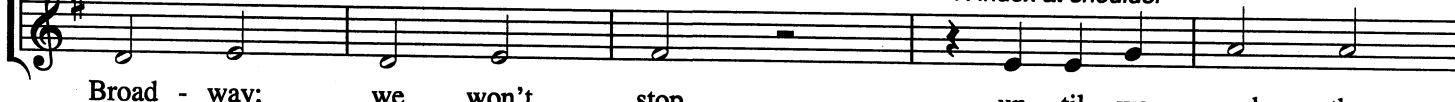
18

Stand w/both thumbs in at chest



gang at For - ty - Sec - ond Street that I will soon be

R index at shoulder



Broad - way; we won't stop un - til we reach the

Copyright © MMI by Alfred Publishing Co., Inc.
All Rights Reserved. Printed in USA.

**NOTE: The purchase of this book carries with it the right to photocopy this page.
Limited to one school only. NOT FOR RESALE.**