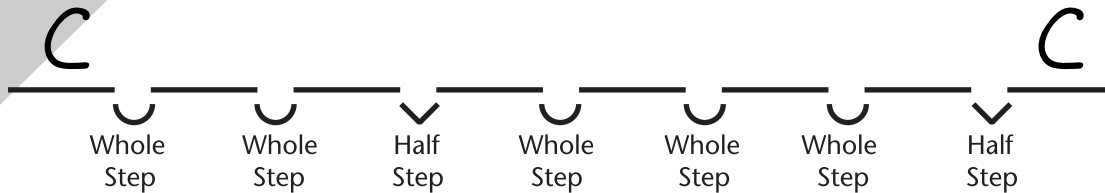


The C Major Scale Worksheet

STEP 1: Write the Letter Names

- A. On the lines below, WRITE THE LETTERS of the music alphabet in ascending order. (The beginning and ending notes are given.)
- B. To create the correct order of whole steps and half steps, use the pattern for a major scale. The scale of C major has no sharps or flats.



STEP 2: Play and Say

Using tetrachord fingering (no thumbs), play the scale on the keyboard while saying the letter names. (For review, see page 5.)

STEP 3: Draw the Pattern of White and Black Keys

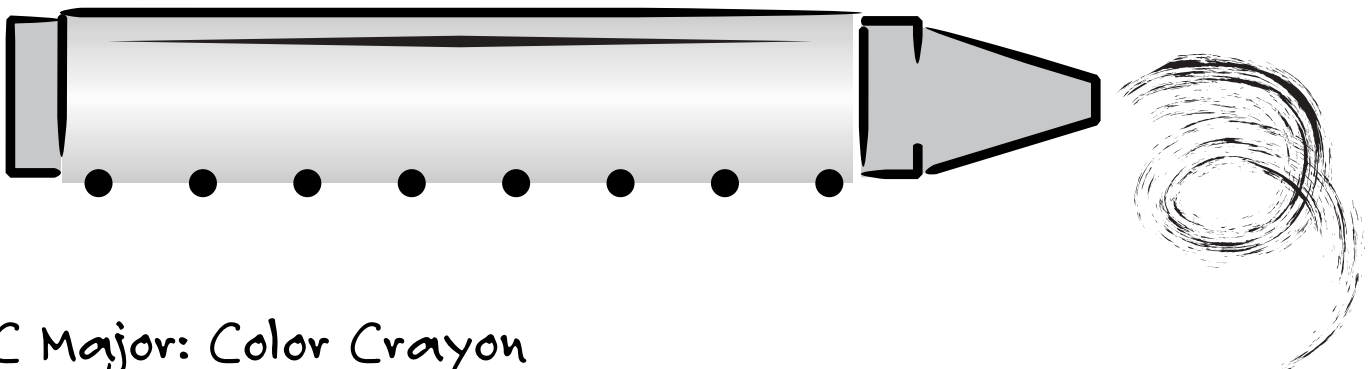
Use the pattern of white and black keys in the C major scale to complete the following:

- A. If the key is WHITE, circle the LOWER dot; if the key is BLACK, circle the UPPER dot.
- B. Connect the circled dots.

Black Keys: ● ● ● ● ● ● ● ●

White Keys: ● ● ● ● ● ● ● ●

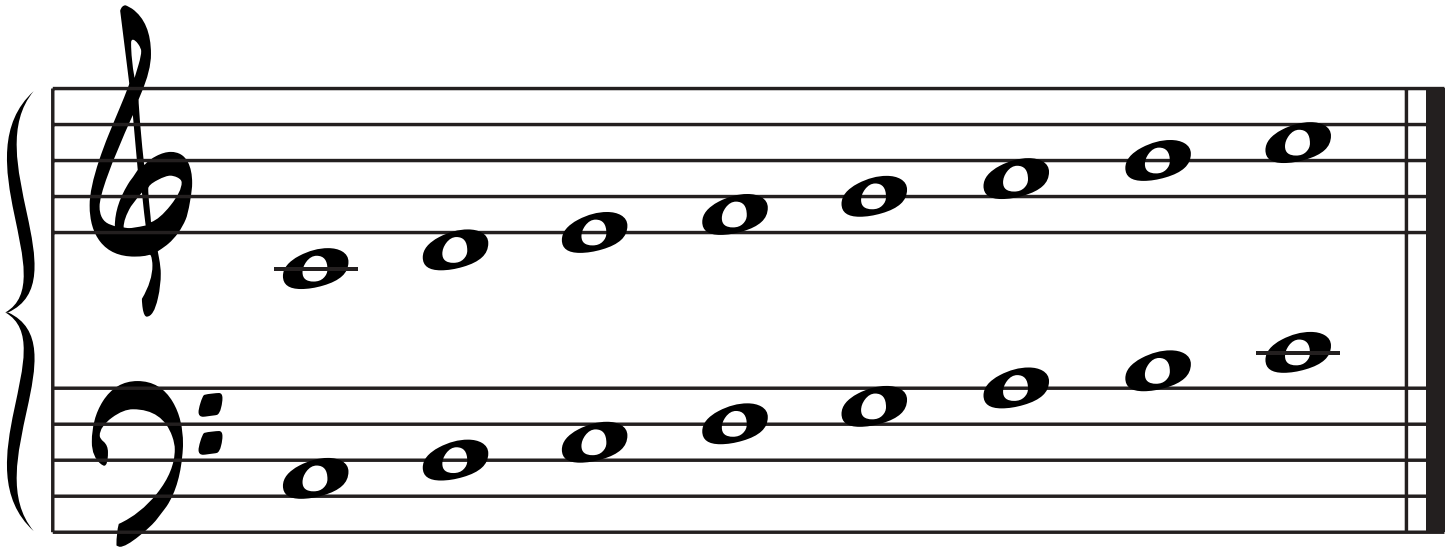
- C. Connect the dots in the picture of the **Color Crayon**, matching the pattern in Step 3B above.



C Major: Color Crayon

STEP 4: Compare the Pattern of Whole Steps and Half Steps

On the grand staff below, COMPARE THE PATTERN OF WHOLE STEPS and HALF STEPS with Step 1B. Remember that the major scale pattern is W W H • W • W W H



STEP 5: C Major Key Signature

There are no sharps or flats in the key signature of C major.



STEP 6: Play the Scale

A. Play a one-octave C major scale while saying the note names. Play hands separately or hands together, ascending and descending. Use the fingering below.

*HINT: Remember the picture of the **Color Crayon** as you play.*

RH | 2 3 | 2 3 4 5

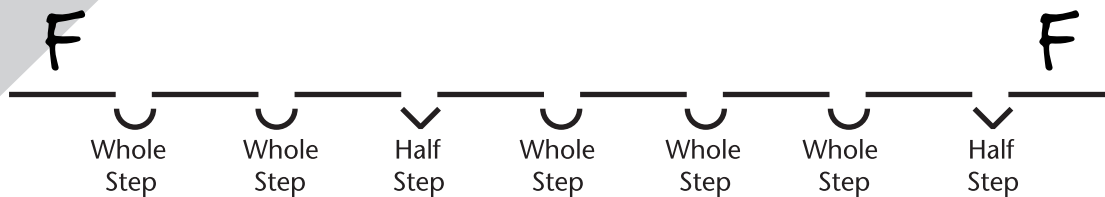
LH 5 4 3 2 | 3 2 1

B. Play the scale again, reading the notes of the C major scale (Step 4).

The F Major Scale Worksheet

STEP 1: Write the Letter Names

- A. On the lines below, WRITE THE LETTERS of the music alphabet in ascending order. (The beginning and ending notes are given.)
- B. To create the correct order of whole steps and half steps, use the pattern for a major scale and add a FLAT (*b*) where necessary. *HINT: Put the *b* to the right of the letter name.*



STEP 2: Play and Say

Using tetrachord fingering (no thumbs), play the scale on the keyboard while saying the letter names. (For review, see page 5.)

STEP 3: Draw the Pattern of White and Black Keys

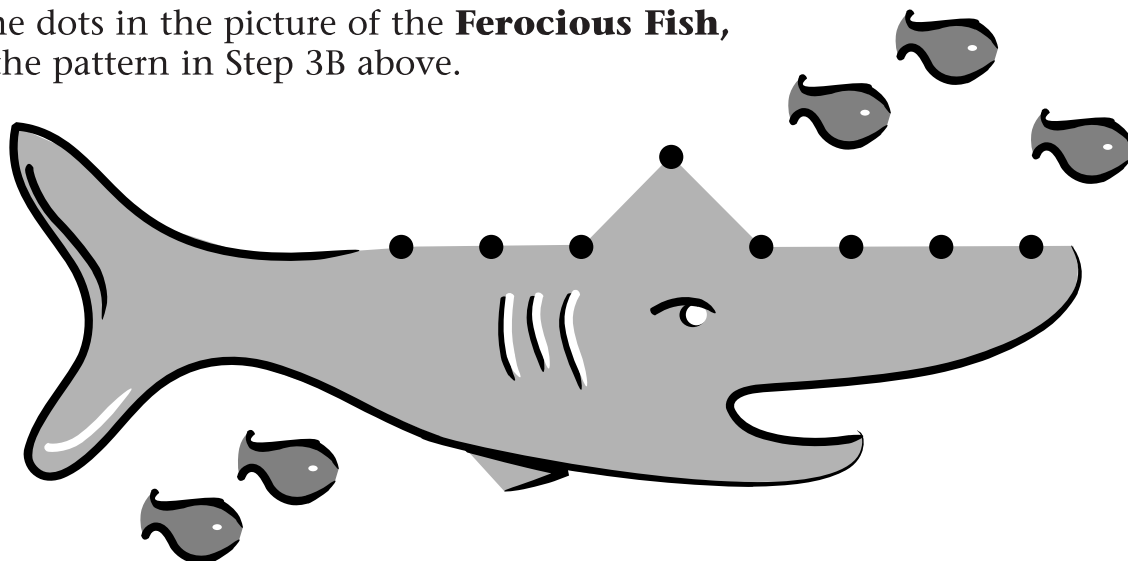
Use the pattern of white and black keys in the F major scale to complete the following:

- A. If the key is WHITE, circle the LOWER dot; if the key is BLACK, circle the UPPER dot.
- B. Connect the circled dots.

Black Keys: ● ● ● ● ● ● ● ●

White Keys: ● ● ● ● ● ● ● ●

- C. Connect the dots in the picture of the **Ferocious Fish**, matching the pattern in Step 3B above.



F Major: Ferocious Fish