

Simple Gifts/Pachelbel's Canon is an arrangement that beautifully partners the beloved traditional Shaker folk song, *Simple Gifts*, with the famous *Canon in D*, by Johann Pachelbel. It is appropriate for performance by both school and church choirs.

The accompaniment may be performed by keyboard (1 player) or keyboard plus C-Instrument. If a C-Instrument is not available, that part may be played by a second player at the piano, or it may be added to organ accompaniment.

Available in 3 voicings for singers of all ages, **Simple Gifts/Pachelbel's Canon** may be appropriate for school concerts or festivals and for worship throughout the year, especially for harvest, thanksgiving or peace services. When performed by church choirs, suggested corresponding scripture readings include Psalm 19: 7-11, Romans 16: 17-20 and 2 Corinthians 1: 12. One basic homiletical theme is living in simplicity and godly sincerity through the great gift of God's grace.

Donald Moore is a secondary school choral director for North Olmsted Schools, North Olmsted, Ohio, and Organist-Choirmaster at Pilgrim United Church of Christ in Cuyahoga Falls, Ohio. A graduate of Kent State (OH) University with a B.M. in organ performance and M.A. in teaching, he is a multiple winner of the ASCAP Standards Award and is a widely published composer.

Preview Only
Legal Use Requires Purchase

SIMPLE GIFTS/PACHELBEL'S CANON

for 2-part or S.S.A. voices, accompanied,
with opt. C-Instrument, piano (2-players) or organ*

Arranged by
DONALD MOORE (ASCAP)

TRADITIONAL SHAKER TUNE
and CANON IN D
by JOHANN PACHELBEL (1653-1706)

Simply (♩ = ca. 116)

C-INSTR. (PRIMO) *mp*

Simply (♩ = ca. 116)

ACCOMP. (SECONDO) *mp*

4 UNISON VOICES *mp* ⑤

'Tis the gift to be sim - ple, 'tis the (tacet)

7

gift to be free, 'tis the gift to

* Also available for S.A.T.B. voices, No. 19139, and S.A.B. voices, No. 19140. Part for C-Instrument may be found on page 11. A full performance/accompaniment compact disc, No. 19142, is available separately.

Copyright © MM by Alfred Publishing Co., Inc.
All rights reserved. Printed in USA.

10 PART I

come down where we ought to be, and

PART II

come down where we ought to be, and

13

when we find our - selves in the

when we find our - selves in the

15

place just right, 'twill be in the

place just right, 'twill be in the

18

val - ley of love and de -

val - ley of love and de -

20

light. When true sim -

light. When true sim -

21 *mf*

22

plic - i - ty is gained, to bow and to bend we ____

plic - i - ty is gained, bow, bend,

24

shan't be a-shamed. To turn, turn will be our de-light, till by
 shan't be a-shamed. To turn will be our de-light,

27

turn - ing, turn - ing we come round right.
 turn - ing, turn - ing we come round right. Al - le -

mp

30

'Tis the
 lu - ia, al - le - lu - ia,

mp

33

gift to be sim - ple, 'tis the gift to be free, 'tis the

al - le - lu - ia,

C-INSTRUMENT (PRIMO)

mp

33

35

gift to come down where we ought to be, and

al - le - lu - ia.

35

* Primo should play mm. 33-40 one octave higher.

37

when we find our-selves in the place just right, 'twill

Al - le - lu - ia,

37

This system contains two systems of music. The top system is for the voice, starting at measure 37. The lyrics are "when we find our-selves in the place just right, 'twill" on the first line and "Al - le - lu - ia," on the second line. The bottom system is for the piano accompaniment, also starting at measure 37. A large red watermark "Preview Only" is overlaid diagonally across the page.

39

be in the val - ley of love and de - light. 'Tis the

al - le - lu - ia.

39

This system contains two systems of music. The top system is for the voice, starting at measure 39. The lyrics are "be in the val - ley of love and de - light. 'Tis the" on the first line and "al - le - lu - ia." on the second line. The bottom system is for the piano accompaniment, also starting at measure 39. A large red watermark "Preview Only" is overlaid diagonally across the page.

41

S. 1 *mf*

gift to be sim - ple, 'tis the gift _____ to be

* S. 2 (optional)

mf

A.

Al - le - lu - ia, al - le -

mf

41

mf

44

free, 'tis the gift to come down

lu - ia, al - le - lu - ia,

44

* Two-part voices should sing S. 1 and A only.

47 (49) *gradually decresc.*

where we ought to be. *gradually decresc.*

al - le - lu - ia. Al - le -

gradually decresc.

47 (49) *gradually decresc.*

Detailed description: This system contains the first two systems of music. The first system has two vocal staves and a piano accompaniment staff. The vocal parts begin with the lyrics 'where we ought to be.' and 'al - le - lu - ia. Al - le -'. The piano accompaniment features a rhythmic pattern of eighth notes. The second system continues the vocal parts and piano accompaniment, with the lyrics 'al - le - lu - ia.' and 'Al - le -'. Both systems include the instruction '(49) gradually decresc.'.

50 *rit.* *p*

al - le - lu, al - le - lu - ia. *p*

lu, al - le - lu, al - le - lu - ia. *p*

rit. *p*

50 *rit.* *p*

Detailed description: This system contains the second two systems of music. The first system has two vocal staves and a piano accompaniment staff. The vocal parts continue with the lyrics 'al - le - lu, al - le - lu - ia.' and 'lu, al - le - lu, al - le - lu - ia.'. The piano accompaniment continues with the same rhythmic pattern. The second system concludes the vocal parts and piano accompaniment. Both systems include the instruction '(49) gradually decresc.'.

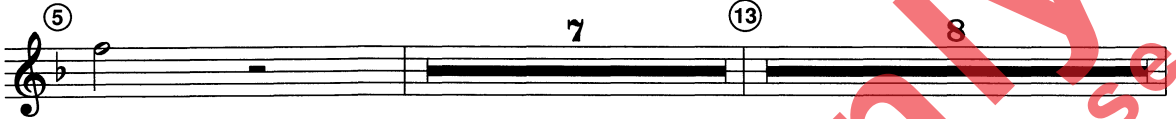
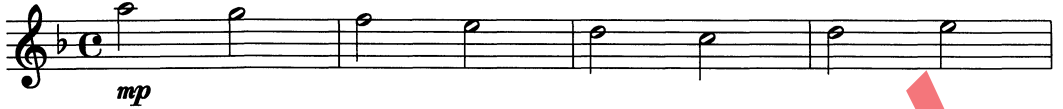
SIMPLE GIFTS/PACHELBEL'S CANON

C-INSTRUMENT

Arranged by
DONALD MOORE (ASCAP)

TRADITIONAL SHAKER TUNE
and CANON IN D
by JOHANN PACHELBEL (1653-1706)

Simply (♩ = ca. 116)



Copyright © MM by Alfred Publishing Co., Inc.
All rights reserved. Printed in USA.