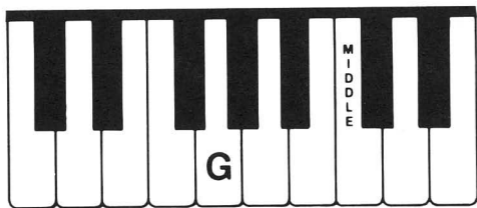
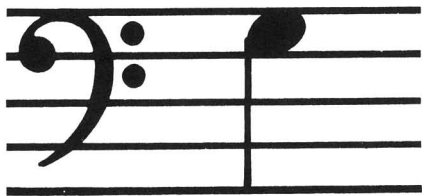


Lesson Book 1
PAGE 10



PLAY IT!



Notes, symbols, terms, etc., are introduced one at a time. The cards may be arranged in categories for extra drill and review.

CARD CATEGORIES

KEY RECOGNITION:

White Keys: 1-7

Black Keys: 99-103

NOTE VALUES: 14, 15, 22, 55, 80, 83, 84

REST VALUES: 25, 27, 48, 122

NOTES:

C position: 9-13, 17-21

G position: 13, 21, 57, 59, 61-66

Other notes: 49, 52, 72, 74, 112-115, 120,
126, 135

INTERVALS: 28-31, 34-37, 39-46, 85-88, 90-97,
127-129

DYNAMICS: 32, 33, 38, 77, 106, 121

TIME SIGNATURES: 24, 54

KEY SIGNATURES: 109, 116, 119, 125, 133

CHORDS: 47, 50, 53, 58, 60, 68-71, 73, 75, 107,
108, 110, 111, 117, 123, 130-132, 134

MISCELLANEOUS SIGNS & TERMS:

8, 16, 23, 26, 51, 56, 67, 76, 78, 79, 81, 82, 89,
98, 104, 105, 118, 124

FURTHER INSTRUCTIONS FOR USE OF FLASHCARDS.

Cards are numbered at the bottom, in order of introduction in the LESSON BOOK of Alfred's Basic Adult Course.

Page numbers corresponding to Lesson Book pages are given in the UPPER LEFT CORNER of each card. As these pages are studied in the Lesson Book, pull out the appropriate cards. Cards may be kept on a 1½" loose leaf ring hung on a hook, or held together with a rubber band, to use for drill and review.

Emphasize drill on NEW CARDS. Review the old cards every few weeks.

Answers on the backs of cards are easily understood by anyone, whether or not they have had musical training. Students may be given flash card drills at home by family members and friends.