

# CONTENTS

## GETTING STARTED

Foreword	4
----------	---

### Lesson 1:

<b>Right-Hand Chord Voicing</b>	6
Top-Down Voicing	6
<b>BROADWAY LIGHTS</b>	7
The Magical Sounds of Top-Down Voicings	8
<b>NEW DAY</b>	8
Exploring Top-Down Voicings	9
<b>NEW DAY</b> (second version)	9
Altered Top-Down Voicings	10
<b>NEW DAY</b> (third version)	10
<b>NEW DAY</b> (fourth version)	11

### Lesson 2:

<b>Left-Hand Chord Voicings and Walking Bases</b>	12
Three Important Chord Voicings	12
<b>EARLY BIRD BLUES</b>	13
Walking Bass	14
Basic Walking Bass	14
Chord Outline Walking Bass	14
Chromatic Walking Bass	15
Professional Application: Add Top-Down Chords to the Walking Bass	16
<b>THE BASIE FEEL</b>	16
Combining Chords and Walking Bass	17
<b>FUNNY BONE</b>	17

### Lesson 3:

<b>Patterns for Creating Rhythmic Drive</b>	18
<b>BLUES MAN</b>	19
Syncopated Two-hand Vamp: Creating the Latin feel	20
<b>ZARAGOSA</b>	21

### Lesson 4:

<b>How to Play in a Jazz Swing Style</b>	24
<b>JAZZ TIME</b>	25
<b>MAGIC SHOP</b>	27
<b>THE SAINTS</b>	28
<b>THE SAINTS GO FORTH</b>	28

### Lesson 5:

<b>Creating Intros and Endings</b>	32
<b>DIGGIN' IN</b>	32
Additional Ways to Create Intros/Endings	34
<b>INTERFACE</b>	36

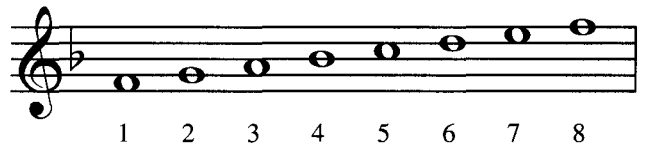
<b>Lesson 6:</b>	
<b>Studio Session</b> .....	38
<b>(BACK HOME AGAIN IN) INDIANA</b> .....	38
Practice Plan for (Back Home Again in) Indiana .....	40
Intro, Two-hand Vamp .....	40
Top-Down Chord Voicing, Walking Bass .....	41
<b>(BACK HOME AGAIN IN) INDIANA (arrangement)</b> .....	42
<b>Lesson 7:</b>	
<b>How to Create a Ballad</b> .....	46
<b>MOONLIGHT</b> .....	48
Adding a New Sound and Feeling to a Ballad .....	50
<b>UNDERCURRENT</b> .....	50
<b>Lesson 8:</b>	
<b>Creating Your Own Professional Sound</b> .....	52
Using the Entire Keyboard .....	52
Swing Style .....	52
Ballad Style: Using Changes in Register .....	53
Enriching the Right-Hand Melody .....	54
Using Locked-Hands Style .....	55
<b>A CHANGE OF HEART</b> .....	56
<b>Lesson 9:</b>	
<b>Master Class for Creating a Professional-sounding Performance</b> .....	58
<b>POOR BUTTERFLY (lead sheet)</b> .....	58
<b>POOR BUTTERFLY: (arrangement) with Master Class Analysis</b> .....	60
Creating an Ending .....	65
Adding an Ending to Poor Butterfly .....	66
<b>Lesson 10:</b>	
<b>Studio Session</b> .....	67
<b>GREENSLEEVES (lead sheet)</b> .....	68
<b>GREENSLEEVES (professional arrangement)</b> .....	69
<b>SONG FOR IRIS</b> .....	74
<b>Professional Musicians Glossary of Terms</b> .....	77
<b>Chord Chart</b> .....	78
<b>A Salute to the Jazz Hall of Famers in this Book</b> .....	80

## Altered Top-Down Voicings

To create contrast and variety in performance, the basic top-down chord can be *altered* by either **lowering** (flattening) or **raising** (sharpening) one or both of the lower scale tones by one half step.

When lowering the middle scale tone, the lowest scale tone is also usually lowered.

### Scale Tones



When raising the middle scale tone, the lowest scale tone is also usually raised.

## New Day Track 2

**Step 3.** Play **New Day**, adding *altered* top-down voicings.

**Moderately**

The musical score for 'New Day' is presented in four systems, each with a measure number in a box (5, 9, 13). The score is in 4/4 time and features piano accompaniment. The first system starts with a *mf* dynamic. The second system starts with a *mp* dynamic. Asterisks (\*) above certain chords indicate altered top-down voicings. The bass line includes fingerings such as 2, 1, 2, 3, 2, 2, 1, 1.

\*Altered top-down chords.