

# Rhythms & Rests

*Frank Erickson*

## Contents

<b>UNIT 1</b>	
Quarters and Eighths.....	2
Quarters and Eighths with Eighth Rests.....	3
Syncopation.....	4
Handel and Haydn.....	5
<b>UNIT 2</b>	
Syncopation with Ties.....	6
Changing Meters—Constant Quarters.....	7
Alternating Meters.....	7
Triplets and $\frac{6}{8}$ Time.....	8
Rhythmette.....	9
<b>UNIT 3</b>	
Sixteenth Notes.....	10
Sixteenth Notes with Rests.....	11
$\frac{3}{8}$ - $\frac{6}{8}$ - $\frac{9}{8}$ - $\frac{12}{8}$ Time.....	12
March Sarcastique.....	13
<b>UNIT 4</b>	
Cut Time—Alla Breve.....	14
Cut Time—with Eighths and Triplets.....	15
Quarter-Note Triplets.....	16
Accents.....	16
High and Low.....	17
<b>UNIT 5</b>	
$\frac{5}{8}$ Time.....	18
$\frac{7}{8}$ Time.....	18
Changing Meters—Constant Eighths.....	19
Alternating Meters—Constant Eighths.....	20
Two Mexican Folk Dances.....	21
<b>UNIT 6</b>	
Rhythms from Erin.....	22
Folk-Song Rhythms.....	23
Ragtime Dance (A Stop-Time Two-Step).....	24

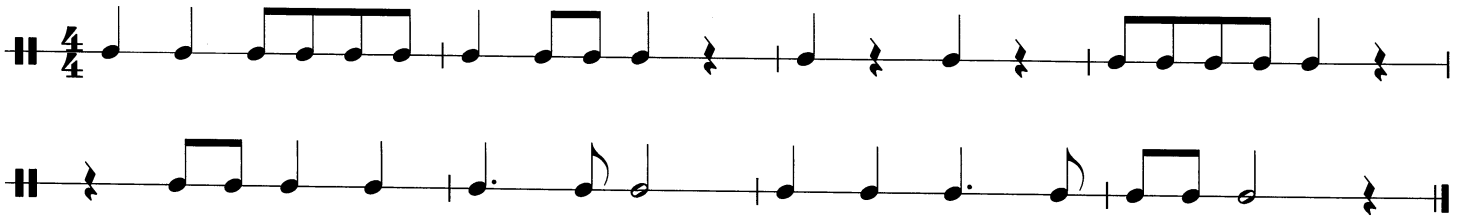
Copyright © MCMXCV by Alfred Publishing Co., Inc.  
All rights reserved. Printed in USA.

Cover illustration: Martin Ledyard



# UNIT 1

## Quarters and Eighths



The rhythm studies throughout this book can be played in three different ways:

1. Play all eight measures on one note;
2. Select one measure and repeat it on each note of a scale;
3. Play all eight measures, each one on a different note of a scale.



All adjoining studies (1 & 2) in each unit may be played together. They should first be practiced separately, then combined. The band may be divided into two sections with each section playing a different part. They may also be used with smaller groups or as duets for two single instruments.



# UNIT 4

## Cut Time — Alla Breve

Two staves of musical notation in cut time (C). The top staff begins with a double bar line and a common time signature (C). The bottom staff begins with a double bar line. Both staves contain rhythmic patterns of quarter notes and rests.

1.

Four staves of musical notation for exercise 1 in bass clef, 2/4 time. The key signature has two flats (B-flat and E-flat). The notation includes quarter notes, eighth notes, and rests.

2.

Four staves of musical notation for exercise 2 in bass clef, 2/4 time. The key signature has two flats (B-flat and E-flat). The notation includes quarter notes, eighth notes, and rests.