

Conductor (Complete Score and Teacher's Guide)

Alfred's **BASIC** **BAND METHOD**

By **SANDY FELDSTEIN & JOHN O'REILLY**

A Complete Curriculum for Instrumental Instruction

Alfred's Basic Band Method consists of a Method book for each instrument of the band plus the following supplementary materials: a Band Series of individual pieces, Solo & Ensemble Books, a Theory Concepts Book, Fantastic Familiar Folksongs Book (solos and duets), and Computer Tutor Book and Diskette (see back cover for descriptive write-ups). The Method is a carefully paced course of instruction specifically designed for today's young beginner. It combines a rhythmic approach with familiar tunes, rock pieces, classical themes, creative involvement, and many duets. Every new note and concept is systematically reinforced to insure complete understanding.

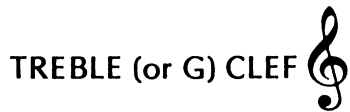
INSTRUMENTATION

Conductor (Complete Score and Teacher's Guide)	Horn in F
Flute (Oboe)	Horn in Eb
Bb Clarinet (Bass Clarinet)	Trombone (Baritone B.C., Bassoon)
Eb Alto Saxophone (Baritone Saxophone)	Tuba
Bb Tenor Saxophone	Percussion (Sn. Dr., B. Dr., Access.)
Bb Cornet (Baritone T'C.)	Keyboard Percussion

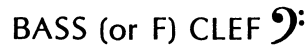
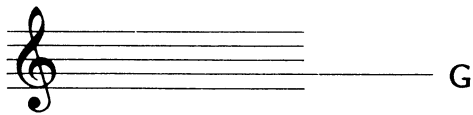
UNIT 1

NOTE PRIMERS

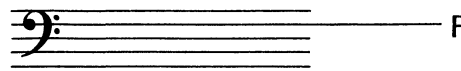
Music is written on a 5 line STAFF. At the beginning of each staff there is a :



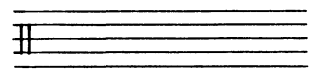
The end of it points to the G line.



It points to the F line.



NEUTRAL CLEF (II)
which shows no
specific pitch.
(used by the percussion)

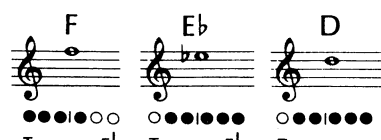


Musical sounds (low or high) are shown by the position of notes on the staff.
Notes are named after the first seven letters of the alphabet - A to G.

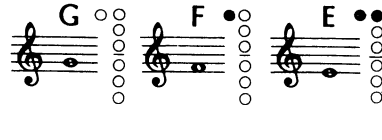
This primer page is designed to introduce each instrument to its first notes. The notes taught are those shown on this page. Refer to a student's book for layout.

b = Flat (Eb = E flat)


FLUTE



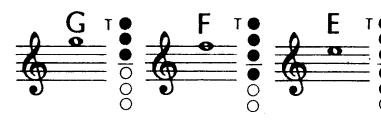
Bb CLARINET



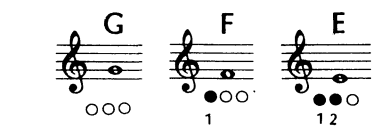
Eb ALTO SAX



Bb TENOR SAX

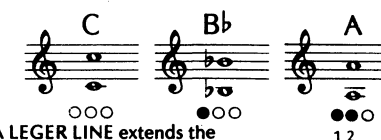


CORNET



b = FLAT (Bb = B FLAT)

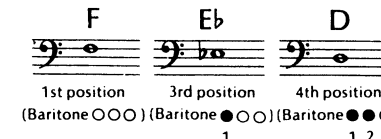
HORN IN F



A LEGER LINE extends the staff lower and higher.

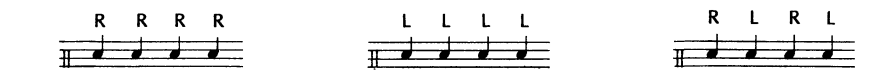
b = Flat (Eb = E flat)

TROMBONE

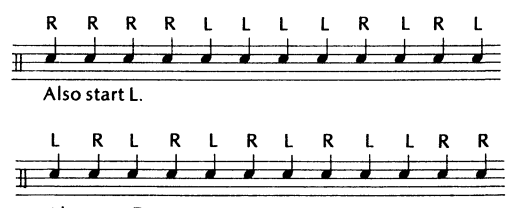


PERCUSSION

Snare Drum sounds are indicated on the third space of the staff.



Play 4 notes with your right hand. Play 4 notes with your left hand. Play 4 notes alternating strokes.




Also start L.

Also start R.

b = Flat (Eb = E flat)

TUBA



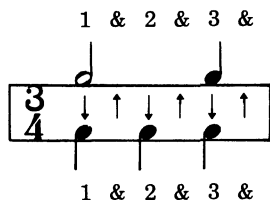

After playing the new notes separately, they should be played ascending and descending. This music, using the appropriate pitches, appears in each student's book.

UNIT 7

NEW TIME SIGNATURE

3 = Three counts in each measure

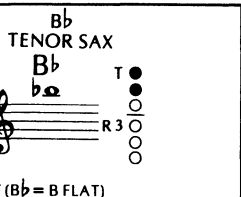
4 = Quarter notes receive one count



PERCUSSION

RUDIMENT

FLAM TAP combines a grace note with a group of double strokes.



FLUTE
Ab
c#
T Eb

Bb CLARINET
RK L-1
b = FLAT (Bb = B FLAT)

Eb ALTO SAX
F T

CORNET
Bb
b = FLAT (Bb = B FLAT)

HORN IN F
Eb

TROMBONE
Ab
3rd position
(Baritone ●○○)
1

TUBA
Ab

PRACTICE KEY

COUNT THE BEATS AND CLAP THE RHYTHM.

SING THE RHYTHM USING "TAH".

Bb Insts: When a note has a flat sign placed before it, it is played flat throughout that measure.