

# STUDENT'S PRACTICE GUIDE

To become a good musician you must practice every day. Find a convenient place where you can keep your instrument, book, music stand and any other practice equipment. Try to practice at the same time every day. To help you schedule your time, use this Daily Practice Guide.

Name \_\_\_\_\_

Band Class (Day/Time) \_\_\_\_\_

[illegible]

## TRADITIONAL GRIP



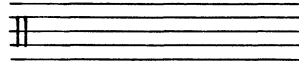
## MATCHED GRIP



# UNIT 1

## NOTE PRIMERS

Music is written on a 5 line STAFF. At the beginning of each staff there is a neutral CLEF (C) which shows that the instrument has no specific pitch.



Snare Drum sounds are indicated on the third space of the staff.



Play 4 notes with your right hand.



Play 4 notes with your left hand.



Play 4 notes alternating strokes.



Also start L.



Also start R.