

in memory of Peg and Mil Davis

AMAZING GRACE/PACHELBEL'S CANON

for 2-Part voices, accompanied,*
with optional descant

Verses 1-2 by JOHN NEWTON (1725-1807)

Verse 3, ANONYMOUS

TRADITIONAL FOLK HYMN

and CANON IN D

by JOHANN PACHELBEL (1653-1706)

Arranged by JEAN ANNE SHAFFERMAN

Gently (♩ = ca. 92-96)

ACCOMP.

mp

The first system of the piano accompaniment is in 4/4 time, marked *mp*. It features a gentle melody in the right hand and a simple harmonic accompaniment in the left hand.

UNISON VOICES

mp

5

A - maz - ing grace! How

The second system of the piano accompaniment continues the melody and accompaniment from the first system, supporting the unison voices.

sweet the sound that saved a—

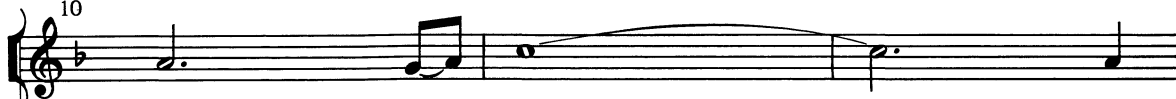
The third system of the piano accompaniment concludes the piece with a final chord and a short descant in the right hand.

* Also available for S.A.T.B. voices, No. 16095, and S.A.B. voices, No. 16096.

Copyright © MCMXCVII by Alfred Publishing Co., Inc.

All rights reserved. Printed in USA.

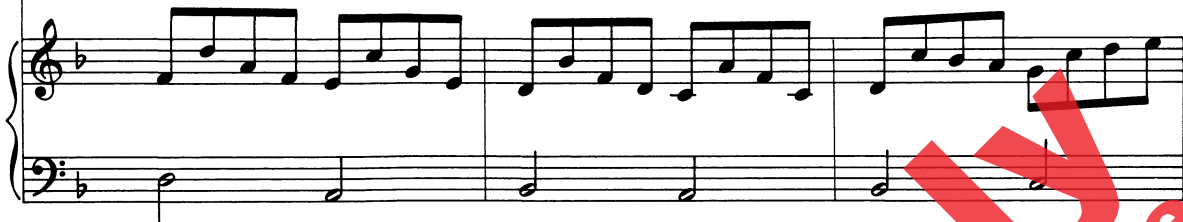
10



wretch

like— me!_____

I



13



once

was— lost

but

now—

am—

found;

was



17



blind,

but— now

I

see!_____

'Twas



21

PART I

grace that — taught my heart to fear, and

PART II

grace that — taught — my heart to fear, and

mf

25

grace my — fears re - lieved; — How

grace my — fears my fears re - lieved; —

29

pre - cious did that grace — ap - pear the

How pre - cious did that grace — ap - pear the

33 *poco rit.*

hour I first be - lieved, first be -

hour I first be - lieved, I first be -

poco rit.

37 *a tempo*
mp

lieved.

mp

lieved.

a tempo
mp

40

mf

cresc.

44 DESCANT
(a few high voices)45 *mf*

Al - le - lu - ia, al - le - lu - ia,

PART I

When we've been there ten thou - sand years bright

PART II

Al - le - lu - ia, al - le - lu,

45

al - le - lu - ia, al - le - lu - ia;

shin - ing as the sun; We've

al - le - lu - ia, al - le - lu - ia;

53

mp

Al - le - lu - ia, sing God's praise_ than when we_



no less_ days to sing_ God's_ praise than when we_

mp

Al - le - lu - ia, al - le - lu, al - le

53

mf

first be - gun. A - men.



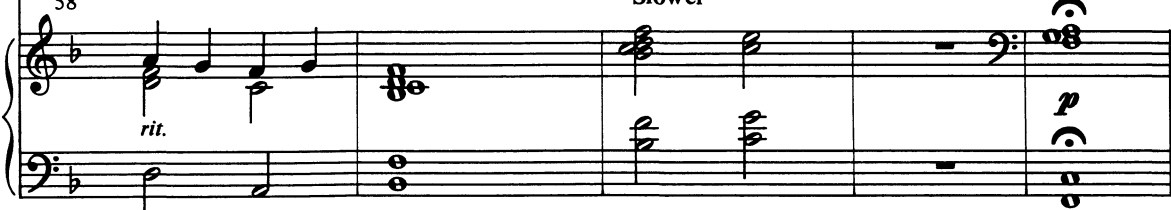
first be - gun. A - men.



lu - ia, a - men, a - men.

58

Slower



Amazing Grace/Pachelbel's Canon is an anthem that beautifully weds the famous *Canon in D* by Johann Pachelbel with the beloved traditional folk hymn, *Amazing Grace*. It is appropriate for performance by both church and school choirs.

In rehearsal, strive for a very legato sound enlivened by a strong sense of the underlying eighth-note pulse. Sing the melody in mm. 4-20 with all voices in unison on the neutral syllable "noo," pulsing eighth notes in precise alignment with the accompaniment. Add the text only after the underlying pulse is adequately internalized and the phrases are beautifully shaped.

In the middle verse (mm. 20-37), highlight the moving parts in the alto, mm. 22, 26, 29, 31 & 34-35. Similarly, in the final verse (mm. 44-62), clearly delineate the melody from the two contrapuntal "alleluia" voices. An excellent rehearsal technique for both verses is to sing them on staccato "doo" until the choir is keenly aware of all of the moving voices.

In the final verse, the stepwise descending descant "alleluia" is passed to the altos in mm. 57-60. To illustrate this motion to the singers, ask them to rehearse mm. 53-60 on "noo" except for the stepwise descending alleluias.

When performed in worship services, this anthem may be appropriate for Lent, All Saints', Eastertide or general occasions. Suggested corresponding lectionary readings include Psalm 27, Isaiah 41, 2 Corinthians 9: 6-15, Ephesians 1: 1-10 and Ephesians 2: 1-10. One basic homiletical theme is praising the God of grace who guides us through our darkest moments and promises eternal life to all the faithful.

Jean Anne Shafferman is Director of Church Choral Publications for Alfred Publishing Company. A graduate of the University of Kentucky with a B.M.E. in vocal music education and an M.A. in music theory, she is active as a church musician, clinician, and composer and has served as the Eastern Division Music in Worship Chairperson for the American Choral Directors' Association.