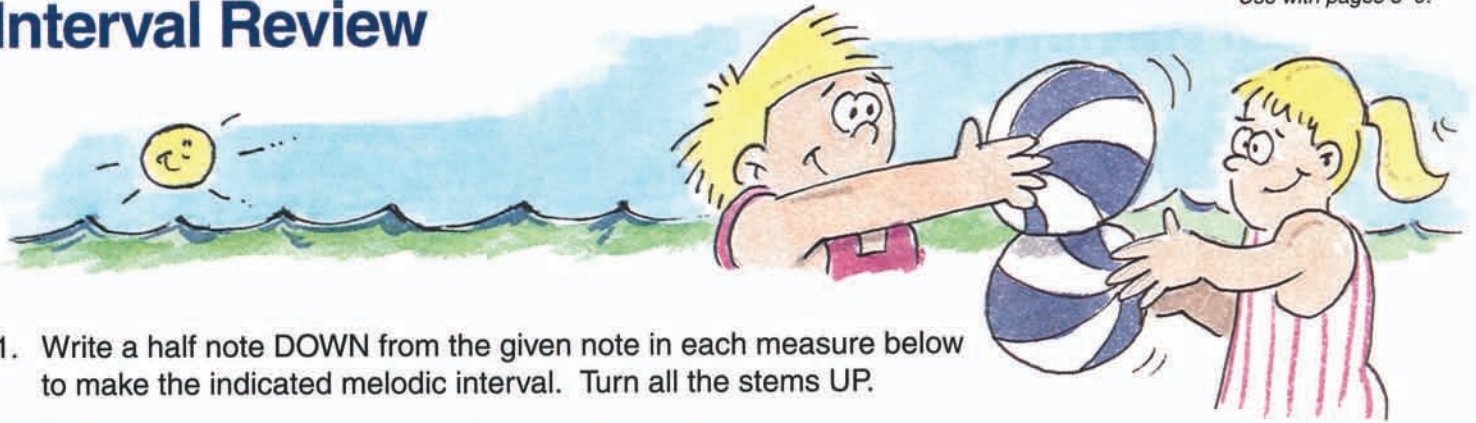


Interval Review



- Write a half note DOWN from the given note in each measure below to make the indicated melodic interval. Turn all the stems UP.
- Write the name of each note in the square below it.

3rd 2nd 6th 4th 5th 6th 4th

--	--	--	--	--	--	--	--	--	--

6th 4th 3rd 2nd 6th 3rd 5th

--	--	--	--	--	--	--	--	--	--

- Write a whole note BELOW the given note to make the indicated harmonic interval.
- Write the names of the notes in the squares below the staff. Write the name of the lower note in the lower square; the name of the higher note in the higher square.

6th 3rd 4th 2nd 5th 6th 3rd

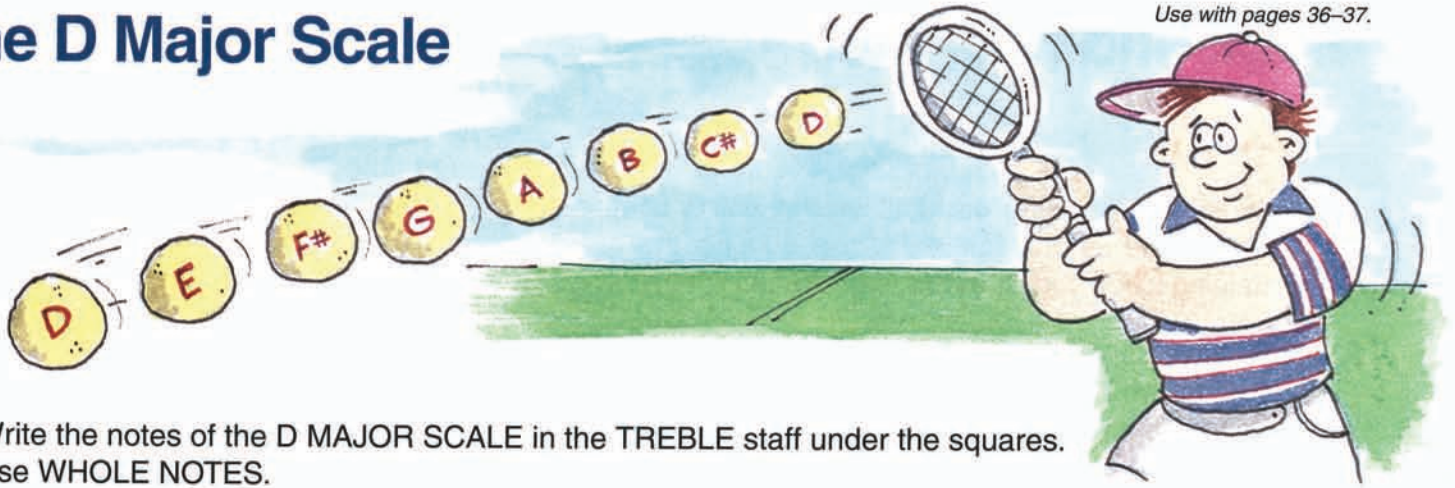
--	--	--	--	--	--	--

6th 3rd 2nd 6th 4th 2nd 5th

--	--	--	--	--	--	--

The D Major Scale

Use with pages 36–37.



- Write the notes of the D MAJOR SCALE in the TREBLE staff under the squares. Use WHOLE NOTES.

D
E
F#
G
A
B
C#
D

- Write the notes of the D MAJOR SCALE in the BASS staff over the squares. Use WHOLE NOTES.

D
E
F#
G
A
B
C#
D

- Write the name of each note in the square below it—then play and say the note names.

#

#

#

#

#

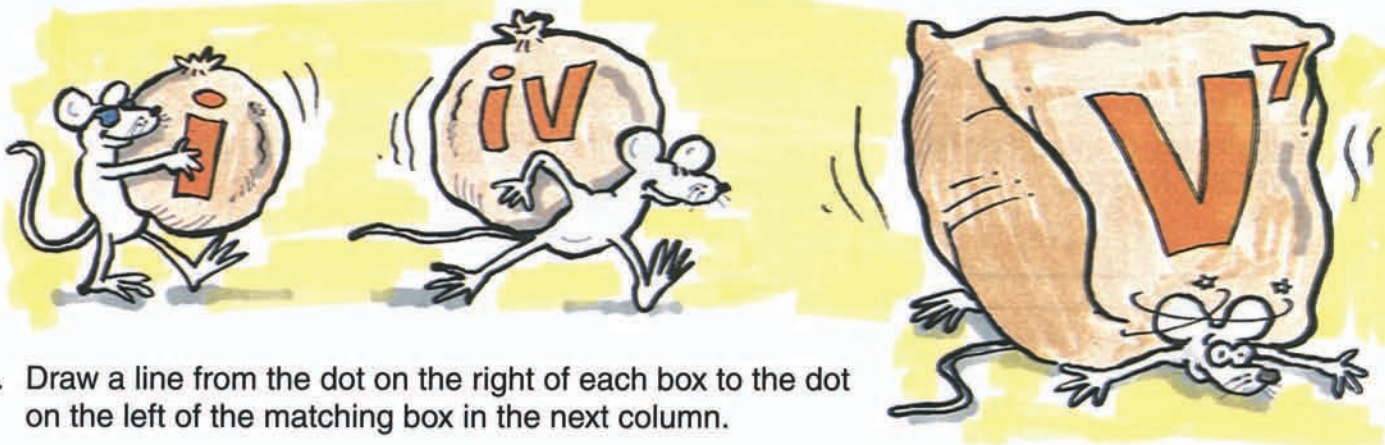
#

#

#

The Primary Chords in A Minor

1. Write the names of the notes in each chord in the squares above the staff.
2. Circle the root of each chord on the staff.
3. Write the name of the chord (i, iv or V⁷) on the line below the staff.



4. Draw a line from the dot on the right of each box to the dot on the left of the matching box in the next column.
