

Arpeggios

1. Your teacher will play four patterns that use broken chords. Circle the pattern that you hear.
2. Your teacher will play a BLOCK chord followed by a BROKEN chord. Write the notes of the BROKEN chord in the order that they are played, using QUARTER and EIGHTH notes.

1a

1b

1c

1d

2a

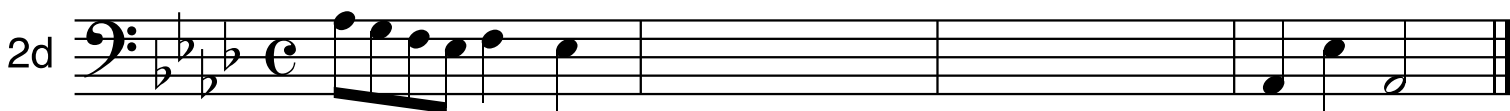
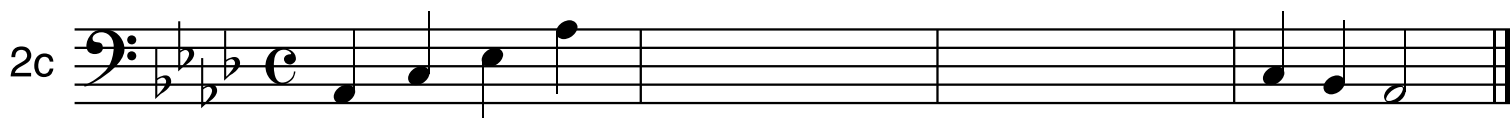
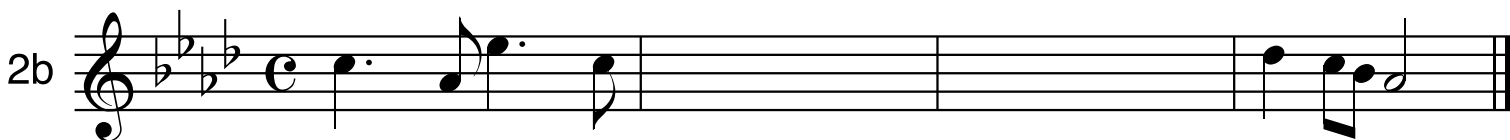
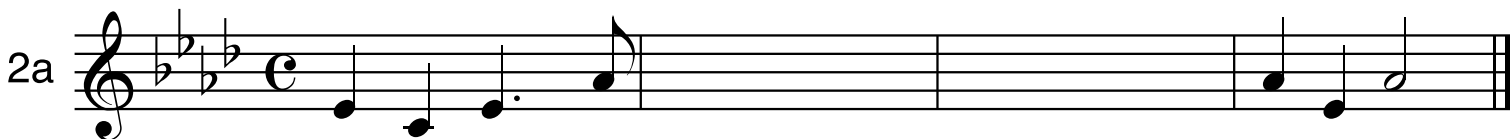
2b

2c

2d

The A \flat Major Scale

1. Your teacher will play A \flat MAJOR SCALES. One note in each scale will be played incorrectly. Circle the incorrect note.



Teacher's Examples

Page 21 (Play)

Page 21 (Play) contains eight musical examples, labeled 1a through 2d, arranged in two columns. All examples are in the key of A major (three sharps) and 3/4 time. Examples 1a, 1b, 1c, and 1d are in the treble clef, while 2a, 2b, 2c, and 2d are in the bass clef. Examples 1a and 1b are single-line staves, while 1c, 1d, 2a, 2b, 2c, and 2d are two-line staves. The notation includes various rhythmic values such as quarter, eighth, and sixteenth notes, as well as rests and accidentals.

Page 22 (Play)

Page 22 (Play) contains eight musical examples, labeled 1a through 2d, arranged in two columns. All examples are in the key of B-flat major (two flats) and 4/4 time. Examples 1a, 1b, 1c, and 1d are in the treble clef, while 2a, 2b, 2c, and 2d are in the bass clef. Examples 1a, 1b, 1c, and 1d are single-line staves, while 2a, 2b, 2c, and 2d are two-line staves. The notation includes various rhythmic values such as quarter, eighth, and sixteenth notes, as well as rests and accidentals. Some notes in examples 1a, 1b, 1c, and 1d are enclosed in boxes.