

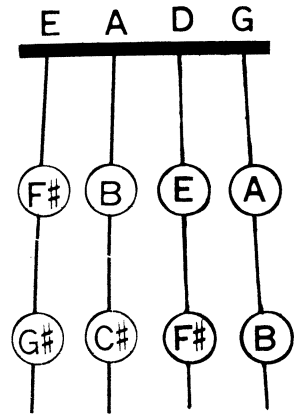
THE 1-4 PATTERN REVIEW

D string: D, E, F#

G string: G, A, B

A string: A, B, C#

E string: E, F#, G#



DIRECTIONS: 1. Write the letter names.

D string

(Note that the sharp is now in the key signature.)

A string

(Note that the sharp is now in the key signature.)

G string

E string

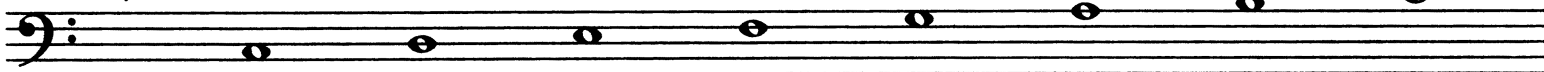
(Note that the sharp is now in the key signature.)

THE MAJOR SCALES IN FLATS

DIRECTIONS:

1. Write in the names of the notes.
2. Write the names of the flats in the squares.
3. Mark the $\frac{1}{2}$ steps. (\wedge)

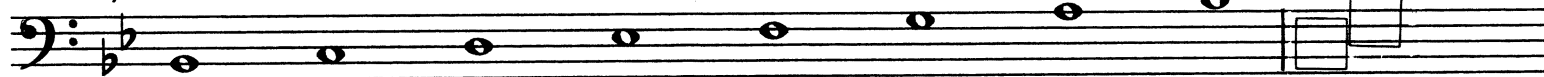
Key of C



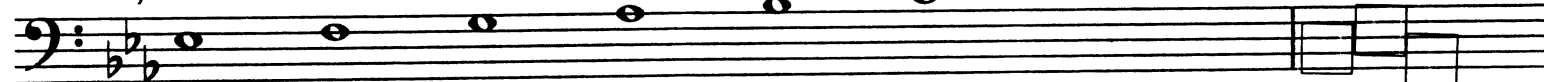
Key of F



Key of Bb



Key of Eb



Key of Ab

