

# *Come to the Lord with Singing*

## SIX CHILDREN'S ANTHEMS FOR THE CHURCH YEAR

*with part-singing and general musicianship  
fundamentals in a graded performance sequence*

Words and Music by Jay Althouse  
Instructional Guides by Jean Anne Shafferman

### **Contents**

1.	<i>Come to the Lord with Singing</i> .....	3
	<i>Instructional Guide</i> .....	4
2.	<i>Everlasting Joyful Praise</i> .....	5
	<i>Instructional Guide</i> .....	7
3.	<i>Our Christmas Song</i> .....	8
	<i>Instructional Guide</i> .....	10
4.	<i>God Is Good; God Is Love</i> .....	12
	<i>Instructional Guide</i> .....	15
5.	<i>Hosanna, Hosanna</i> .....	16
	<i>Instructional Guide</i> .....	19
6.	<i>Song of Joy (Sing an Easter Song)</i> .....	20
	<i>Instructional Guide</i> .....	24



Copyright © MCMXCV by Alfred Music Publishing Co., Inc.  
All rights reserved. Printed in USA.

Cover illustration: Tate Nation  
Cover design: Shannon Cleary Karen

## FOREWORD

**Come to the Lord with Singing** is an anthem collection for church children's choirs, grades 3-6, including a graded sequence of unison and 2-part anthems. It is designed to serve the church year while providing a step-by-step approach to part-singing for young voices. Beginning with a simple unison anthem appropriate for early autumn, it progresses through the church year with a succession of anthems that gradually introduces and reinforces independent part-singing:

- Early Autumn — Simple Unison Anthem
- Harvest or Thanksgiving — Simple Unison Anthem with Call-and-Response
  - Christmas — Extended Unison Anthem with Canon
  - Late Epiphany or Early Lent — Simple 2-Part Anthem
  - Palm Sunday — Simple 2-Part Partner Song
- Easter or General Occasions — Extended 2-Part Partner Song

Additionally, these anthems offer an introduction to basic music literacy as well as opportunities for the development of good diction, basic musicianship, and ensemble singing. The **Director's Edition** presents each anthem with both vocals and keyboard accompaniment, as well as an outline of basic musical concepts and helpful hints for teaching each anthem. This **Singer's Edition** is designed specifically for young singers. It presents each anthem with vocals only, as well as important instructional information formatted in an easy, accessible manner for children.

**Director's Edition, No. 11475**  
**Singer's Edition, No. 11476**

# Music Notation Guide

**Clefs & Staff** — **Clefs** are the symbols normally placed at the beginning of every line of music to indicate the exact location of a particular note on the staff. The vocal score of this anthem uses the treble (G) clef. A **staff** is a system of five parallel lines (and four spaces) on which the notes are written.



**Dynamics** — The different levels of volume in music.

- piano (p)** = soft

**forte (f)** = loud

**crescendo** = gradually louder
- mezzo piano (mp)** = moderately soft

**mezzo forte (mf)** = moderately loud

**decrescendo** = gradually softer

**Meter Signature** — The numbers representing the time-patterns of notes within a measure are the **meter signature**. The meter signature for this anthem is  $\frac{4}{4}$ ; there are four beats in each measure. This meter is used so frequently that it is sometimes called common time and notated using the symbol **C**.

## Basic Note Values in Common Time

- quarter note (♩) & quarter rest (♩) = 1 beat
- half note (♭) & half rest (♭) = 2 beats
- dotted half note (♭.) = 3 beats
- whole note (♩) & whole rest (♩) = 4 beats

**Repeat Signs** — **||: ||** Repeat one time (sing twice) the section enclosed within the signs. If first and second endings are marked, omit the first ending the second time through, going straight to the second ending.

# Pronunciation Guide

**Alleluia** is an ancient **Latin** word that means “Praise ye the Lord!” It contains four of the five simple Latin vowels. Singers must learn **Latin vowels** in order to have good **diction**.

Written	Sounds Like
a	ah
e	eh
i or y	ee
o	aw or oh
u	oo

**Alleluia** sounds like **ahl-leh-LOO-eeah**. The final syllable (ia) is a **diphthong**, consecutive vowel sounds that combine into one syllable. Each vowel must be clearly spoken or sung.

# EVERLASTING JOYFUL PRAISE

for 2-part voices, accompanied

Words and Music by  
JAY ALTHOUSE

Not too fast (♩ = ca. 120)

4

4

5 PART I

*mf*

For the sun and moon on high,

PART II

*mf*

For the sun and moon on high,

9

For the rain - drops from the sky,

For the rain - drops from the sky,

13

Lord of \_ all,

to Thee we \_ raise

Lord of \_ all,

to Thee we \_ raise

17

ev - er - last - ing joy - ful praise.

ev - er - last - ing joy - ful praise.

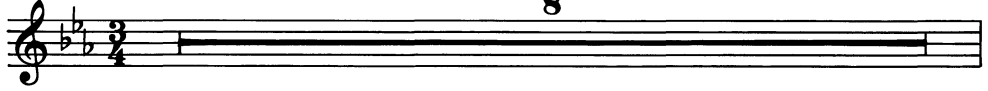
# OUR CHRISTMAS SONG

for 2-part voices, accompanied

*Incorporating a Traditional  
German Round*  
Words and Music by  
JAY ALTHOUSE

With a lilt (♩ = ca. 120)

8



9 PARTS I & II UNISON

*mf*



Long a - go — and far a - way — in a  
Now we cel - e - brate the birth of Je - sus

14



man - ger bed of hay, Christ was born — on  
who — came down to earth. Let us sing — with

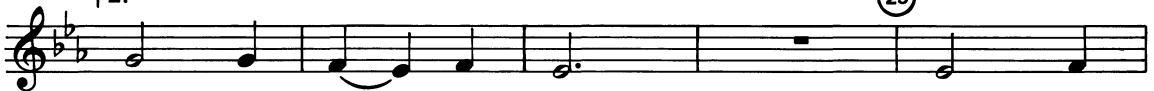
19



Christ - mas day. Hear the an - gels sing.  
joy and mirth

25

2.



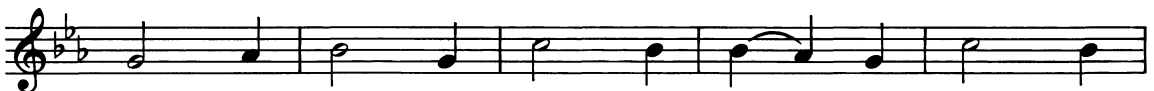
this, our Christ - mas song. Christ - mas

30



is a time for shar - ing, time for car - ing.

35



Stee - ple bells are gen - tly ring - ing, chil - dren