

## Table of Contents

	<i>Page</i>	<i>CD Tracks</i>
Ash Grove . . . . .	52	16, 17
Bile 'em Cabbage Down . . . . .	20	6, 7
Cripple Creek . . . . .	8	2, 3
Flowers of Edinburgh . . . . .	58	18, 19
Gånglåt Från Mockfjärd. . . . .	83	26, 27
I'se the B'y. . . . .	14	4, 5
Kesh Jig . . . . .	70	22, 23
La Valse des Jeunes Filles. . . . .	64	20, 21
Old Joe Clark. . . . .	40	12, 13
Rickett's Hornpipe . . . . .	98	30, 31
Road to Boston . . . . .	34	10, 11
Si Bheag Si Mhor . . . . .	27	8, 9
St. Anne's Reel . . . . .	90	28, 29
Swallowtail Jig . . . . .	46	14, 15
Swinging Fiddles . . . . .	110	32, 33
Westphalia Waltz . . . . .	76	24, 25



### **Recording Available**

The *Fiddlers Philharmonic* accompaniment recording provides two versions of each piece in this book. The first version is a full performance of the piece demonstrating stylistic authenticity, and the second is a slower practice version for students who wish to learn the tune by ear. The solo fiddle part may be dialed out for a “music minus one” effect. Available on Compact Disc (14038) or Cassette (14037).



# Cripple Creek

## OBJECTIVE

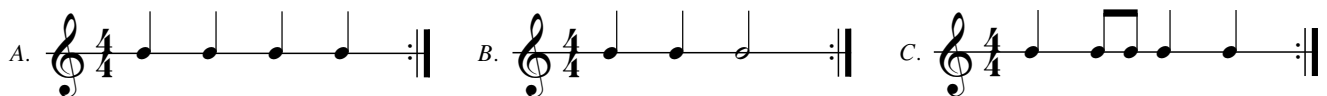
Demonstrate understanding of beat subdivision by performing given rhythm patterns associated with a simple, common fiddle tune.

## FOCUS ON TECHNIQUE

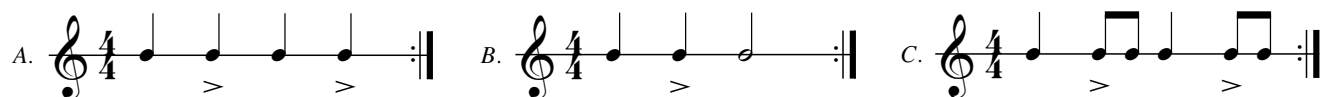
- Open-string scale fingering pattern
- High second finger (violin, viola)
- Establishment of octave structure in left hand
- Alternating bowing patterns
- Simple string crossings

## PREPARATORY EXERCISES

- I. Explore scale and/or fingering patterns of key being used (reflecting either solo version or ensemble version).
- II. First clap or tap, then use *detache* bowing on open strings to perform the following rhythmic and bowing patterns (patterns should be modeled by the teacher and echoed by the students):



- III. Demonstrate that the patterns are grouped in sets of four beats (that is, the meter is in four). The relationship between half, quarter and eighth notes should be explained as necessary.
- IV. The patterns then may be repeated with accents emphasizing beats two and four. Emphasizing the off-beat syncopation in this fashion begins to lay the foundation for an appealing, hard-driving feel that is a cornerstone for a bluegrass sound fitting for *Cripple Creek*:



- V. Lead the students as they perform one- or two-measure patterns based on the above rhythms, using open strings or notes of their own choosing drawn from the appropriate key. Volunteer students can lead remaining students and/or the teacher in echo patterns.

---

## TEACHING THE TUNE BY EAR

*Cripple Creek* in its basic form is a relatively simple tune, both rhythmically and melodically. The melody is evenly sectionalized in two-measure groupings. This tune provides a good entrance to the processes of teaching fiddle tunes by ear in

successively longer chunks. Beginning with the first measure, the teacher and students should play and echo one measure, and then extend it to two. The next two measures can then be learned in the same fashion, joined to the first two measures, and so forth.