

# Super Stomp Rag

Ragtime was a predecessor to early jazz. Composers like pianist Scott Joplin helped set the scene with playful, syncopated melodies. These melodies, combined with a march-like beat in the left hand, created a "ragged" rhythm and gave birth to the genre's name.

## Rhythm Workshop

Tap rhythm 3x daily.

1. Mm. 6–8

Wynn-Anne Rossi

*The audience may participate by lightly stomping one foot on beat 4.*

*Note: Audience stomps do not always coincide with performer stomps!*

**Cheerfully** (♩ = 120)

For Diane Majeski, who was there with me  
from the beginning!

# In the Hall of the Jazz Kings\*

"Preservation Hall. Now that's where you'll find all of the greats." —Louis Armstrong, trumpeter. This famous site features daily concerts of traditional jazz in the French Quarter of New Orleans.

## Rhythm Workshop

Tap rhythm 3x daily.

1. Mm. 1-2

(♩ =  $\overline{\text{3}}\overline{\text{3}}\overline{\text{3}}$ )

RH

LH

Wynn-Anne Rossi

Playfully (♩ = 132) ♩ =  $\overline{\text{3}}\overline{\text{3}}\overline{\text{3}}$

\* Inspired by "In the Hall of the Mountain King" from Peer Gynt Suite No. 1, Op. 46 by Edward Grieg

# Practice the Piano Blues

The blues emerged from the African-American slave culture and the many hardships of life. Preceding jazz, it often included swing rhythm, the blues scale, and a 12-bar pattern of harmony.

## Rhythm Workshop

Tap rhythm 3x daily.

1. Mm. 15–16

Diagram illustrating a rhythm exercise in 4/4 time. The right hand (RH) plays a quarter note followed by a triplet of eighth notes. The left hand (LH) plays a quarter note followed by a triplet of eighth notes. The exercise is labeled "1. Mm. 15–16".

Wynn-Anne Rossi

Sorrowfully (♩ = 72) ♩ = ♩<sup>3</sup>♩

First system of the piano blues score. The piece is in 4/4 time with a key signature of one flat (B-flat). The tempo is marked "Sorrowfully" with a quarter note equal to 72 beats per minute. The melody in the treble clef consists of eighth notes with fingerings 1 2 and 1 4. The bass clef accompaniment consists of quarter notes with fingerings 1/5, 2, and 1/3. The dynamic marking is *mp*.

Second system of the piano blues score. The melody in the treble clef continues with eighth notes and fingerings 5, 2, 1, 2. The bass clef accompaniment includes a triplet of eighth notes with fingerings 3, 1, 2. The dynamic marking is *mp*.

# Cotton Pickin' Blues

African call-and-response traditions gave rise to work songs in the era of slavery. These farm worker "field hollers" transformed into blues "conversations."

## Rhythm Workshop

Tap rhythm 3x daily.

Mm. 2-5

Wynn-Anne Rossi

**Soulfully** (♩ = 84) ♩ =

4

7

# Walk On, Basie!

Walter Page was best known as a double bass player in the famous Count Basie Orchestra. He developed the "walking bass," playing all four beats of the bar in stepwise motion.

## Rhythm Workshop

Tap rhythm 3x daily.

Mm. 8-10

(♩ =  $\overset{\frown}{\text{3}}$ )

RH

LH

With happy feet! (♩ = 132) ♩ =  $\overset{\frown}{\text{3}}$

Wynn-Anne Rossi

*mf*

LH *legato*

4

7

# Yellow Basket for Ella

Ella Fitzgerald earned the title "Queen of Jazz" with her elegant and playful voice. "A-Tisket, A-Tasket," an American nursery rhyme, was one of her most popular hits.

## Rhythm Workshop

Tap rhythm 3x daily.

Mm. 22-24

(♩ =  $\overset{\sim}{\underset{\sim}{\text{J}}}$   $\overset{\sim}{\underset{\sim}{\text{J}}}$ )

RH  
LH

American Nursery Rhyme  
Arr. Wynn-Anne Rossi

Thoughtfully, then playfully (♩ = 120-144) ♩ =  $\overset{\sim}{\underset{\sim}{\text{J}}}$   $\overset{\sim}{\underset{\sim}{\text{J}}}$

5

9

13

# Empress of the Blues

In an era when women and African-Americans had very few rights, Bessie Smith sang her way to success as the magnificent "Empress of the Blues."

## Rhythm Workshop

Tap rhythm 3x daily.

Mm. 1-2

(♩ =  $\overset{\frown}{\text{J}}\text{J}\text{J}$ )

RH

LH

Wynn-Anne Rossi

With soul and spirit (♩ = 100) ♩ =  $\overset{\frown}{\text{J}}\text{J}$

*mp*

5

9

*mf*

# Jelly Roll Stomp

"Jelly Roll" Morton was a pianist who influenced the development of early jazz in the 1920s. He introduced the eight-bar "stomp" chord progression in his famous composition "King Porter Stomp."

## Rhythm Workshop

Tap rhythm 3x daily.

Mm. 7-8

(♩ = ♪<sup>3</sup>♪)

RH  
LH

Wynn-Anne Rossi

With a steady beat (♩ = 132) ♩ = ♪<sup>3</sup>♪

5

(based on "stomp" chord progression)

9



# Hot Five Louie

Trumpeter Louis Armstrong began his brilliant career with a band called the "Hot Fives." Perhaps this honored not only the five performers, but also the "hot" dominant V7 chords in jazz.

## Rhythm Workshop

Tap rhythm 3x daily.

Mm. 9–10

(RH =  $\overset{\sim}{\underset{\sim}{\text{J}}}$  =  $\overset{\sim}{\underset{\sim}{\text{J}}}$ )

Wynn-Anne Rossi

**Energetic!** ( $\text{♩} = 132$ )  $\text{♩} = \overset{\sim}{\underset{\sim}{\text{J}}}$

# Stride into Wally's

Established in 1947, Wally's Cafe in Boston is one of the oldest family-owned jazz clubs in the world. Live jazz of all kinds, including stride piano, is featured 365 days a year. Stride is characterized by large leaps in the left hand.

## Rhythm Workshop

Tap rhythm 3x daily.

Mm. 7-8

(♩ = ♪<sup>3</sup> ♪)

RH

LH

Wynn-Anne Rossi

Playfully (♩ = 120) ♩ = ♪<sup>3</sup> ♪

4

7

For Cindy Harrington,  
on her birthday

# Gypsy Jazz Musette

Gypsy jazz originated in France in the 1930s with guitarist Jean "Django" Reinhardt. Highly popularized in America, this genre was influenced by the French Musette style waltz.

## Rhythm Workshop

Tap rhythm 3x daily.

Mm. 20-21

(♩ =  $\frac{3}{4}$ )

RH

$\frac{3}{4}$

LH

Wynn-Anne Rossi

Charming (♩ = 100) ♩ =  $\frac{3}{4}$

5

9

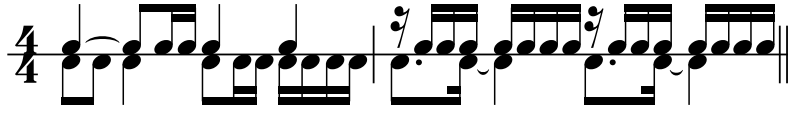
# Lady of the Day

Billie Holiday had a very difficult life as a singer in an era of racism. Nicknamed "Lady Day," she was known for her unique vocal style that included vocal improvisations in her performances.

## Rhythm Workshop

Tap rhythm 3x daily.

Mm. 8-9



Wynn-Anne Rossi

With deep expression ( $\text{♩} = 60$ )

The piano score consists of three systems of music, each with a treble and bass clef staff. Measure numbers 4, 7, and 8 are indicated in boxes at the start of their respective systems.

- System 1 (Measures 4-5):** Starts with a *mp* dynamic. The right hand has a melodic line with a slur over measures 4 and 5. The left hand has a bass line. Fingering: RH (4, 2, 1), LH (1, 5).
- System 2 (Measures 6-7):** Starts with a *mf* dynamic. The right hand has a melodic line with a slur over measures 6 and 7. The left hand has a bass line. Fingering: RH (1, 1, 2, 2, 3, 3, 4, 4, 5, 5), LH (1, 2, 5, 5, 2, 1).
- System 3 (Measures 8-9):** The right hand has a melodic line with a slur over measures 8 and 9. The left hand has a bass line. Fingering: RH (3, 1, 5), LH (4).