

# Viaje al Salto Ángel

## “Journey to Angel Falls”

Angel Falls, in the heart of Venezuela, is the highest uninterrupted waterfall in the world. In the local Pemon language, it is called “Kerepakupai Vená,” meaning “waterfall of the deepest place.”

### Rhythm Workshop

Tap rhythm 3x daily.

mm. 20–22

Secondo

Wynn-Anne Rossi

With energetic anticipation! (♩ = 108)

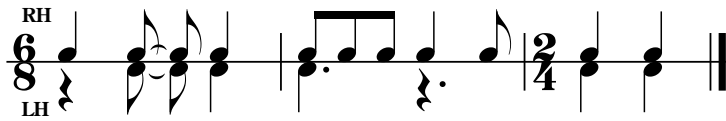
# Viaje al Salto Ángel

## “Journey to Angel Falls”

### Rhythm Workshop

Tap rhythm 3x daily.

mm. 15–17



Angel Falls, in the heart of Venezuela, is the highest uninterrupted waterfall in the world. In the local Pemon language, it is called “Kerepakupai Vená,” meaning “waterfall of the deepest place.”

Primo

Wynn-Anne Rossi

With energetic anticipation! (♩ = 108)

4

mf

8

f

To my friend Peggy, who always captures the beat!

# Celebración mambo

## “Mambo Celebration”

Mambo means “conversation with the Gods” in Kikongo, a language formerly spoken by African slaves in Cuba. The mambo music and dance style began in Cuba and developed in Mexico.

### Rhythm Workshop

Tap rhythm 3x daily.

mm. 9–10

The diagram shows a rhythmic exercise for the right hand (RH) and left hand (LH) in 4/4 time. The RH part consists of a sequence of eighth notes: quarter, quarter, eighth, eighth, quarter, quarter, eighth, eighth, quarter, quarter, eighth, eighth, quarter, quarter, eighth, eighth, quarter, quarter. The LH part consists of a sequence of eighth notes: quarter, quarter, eighth, eighth, quarter, quarter, eighth, eighth, quarter, quarter, eighth, eighth, quarter, quarter, eighth, eighth, quarter, quarter. The exercise is marked with a 7-measure rest in the first measure of each hand.

### Secondo

Twice the spice! (♩ = 72)

Wynn-Anne Rossi

The main musical score is written in bass clef with a tempo of 72 quarter notes per minute. It consists of three systems of music, each with a piano part and a bass line. The first system starts with a forte (*f*) dynamic and ends with a mezzo-piano (*mp*) dynamic. The second system starts with a mezzo-piano (*mp*) dynamic and ends with a forte (*f*) dynamic. The third system starts with a forte (*f*) dynamic. The score includes various musical notations such as slurs, accents, and dynamic markings. Fingerings are indicated by numbers 1-5 above or below notes. Measure numbers 4 and 8 are shown in boxes at the beginning of their respective systems.

To my friend Peggy, who always captures the beat!

# Celebración mambo

## “Mambo Celebration”

Mambo means “conversation with the Gods” in Kikongo, a language formerly spoken by African slaves in Cuba. The mambo music and dance style began in Cuba and developed in Mexico.

### Rhythm Workshop

Tap rhythm 3x daily.

mm. 17–18

Handwritten rhythm notation for the right hand (RH) and left hand (LH). The RH part consists of a sequence of eighth and quarter notes with accents and slurs. The LH part consists of a sequence of quarter notes with accents and slurs. The notation is enclosed in a rectangular box.

Primo

Wynn-Anne Rossi

Twice the spice! (♩ = 72)

Main musical score for piano. It consists of three systems of two staves each (treble and bass clef). The first system starts with a dynamic marking of *f* and includes triplet and four-note groupings. The second system starts with a dynamic marking of *mf*. The third system starts with a dynamic marking of *f*. The score includes various musical notations such as slurs, accents, and dynamic markings.



# Surf en las olas

“Surf on the Waters”

Panama is a vast country with a small population and miles of beautiful, untouched beaches. In the islands of Bocas del Toro, surfers will find ultimate relaxation and challenging waves!

## Rhythm Workshop

Tap rhythm 3x daily.

mm. 21–22

Primo

Breezy (♩ = 112)

Wynn-Anne Rossi

# Samba brasileiro

## “Brazilian Samba”

The samba has become a national symbol of the Brazilian Carnival. The style is felt in two with playful, driving energy. The piano *montuno* is popular in many styles of Latin music (see m. 32).

### Rhythm Workshop

Tap rhythm 3x daily.

mm. 50–51

Secondo

Wynn-Anne Rossi

Energetic! (♩ = 76)

4 1

5 3 4 2

*mf*

*mp*

5

4 2 5 3 1 1

4 2

*mf*

9

2 2 5 3 4 2

*mp*

13

4 2 5 3 1 1

5 4

1 4-1

# Samba brasileiro

## “Brazilian Samba”

### Rhythm Workshop

Tap rhythm 3x daily.

mm. 46–47

Handwritten rhythm notation for the right hand (RH) and left hand (LH). The RH part consists of eighth notes and quarter notes with accents. The LH part consists of quarter notes and eighth notes with accents.

The samba has become a national symbol of the Brazilian Carnival. The style is felt in two with playful, driving energy. The piano *montuno* is popular in many styles of Latin music (see m. 30).

Primo

Wynn-Anne Rossi

Energetic! (♩ = 76)

Main piano score for 'Brazilian Samba'. The score is in 2/4 time and consists of four systems of music. The first system starts at measure 1 and ends at measure 4. The second system starts at measure 5 and ends at measure 8. The third system starts at measure 9 and ends at measure 12. The fourth system starts at measure 13 and ends at measure 16. The score includes dynamic markings such as *mf* and *mp*, and includes fingering numbers (1-5) and articulation marks like slurs and accents. The piece is marked 'Energetic!' with a tempo of quarter note = 76.