

Contents

Song	Page	CD Tracks		Reproducible Lyric Sheet
		Full	Accomp.	
BEWARE THE MUSIC TEACHER!	4	1	2	8
The Boredom Blues	9	3	4	11
<i>Building a Bridge</i>	12	5	6	13
The Day the Animals Joined the Band	16	7	8	17
Christmas Can Last All Year Long	20	9	10	22
Their Love Shines On	23	11	12	26
<i>Hola Means "Hello"</i>	27	13	14	29
<i>Sing a Song for Nature*</i>	30	15	16	31
A Brand New Star in the Sky	36	19	20	37
(Positive) Attitude	40	21	22	41
We Are the Future, We Are the Now	44	23	24	45
About the Author	48			
*Bonus Orchestral Listening Tracks:	30			
• Beethoven's Symphony No. 6 in F Major Opus 68 (Pastoral): Gewitter, Sturm (Thunderstorm)				17
• Debussy's Clair de Lune (Moonlight) from <i>Suite bergamasque</i>				18

BEWARE THE MUSIC TEACHER!

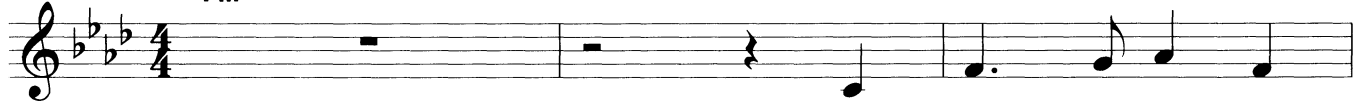


By
MARK BURROWS

Wait for introduction on CD.

Tango

Fm



1. There's some - one new in



school to-day, but no one wants to meet her. She's



some - one we've all heard a-bout. She's our new mu - sic



teach-er. We've heard she has a teach - ing style that's



an - y - thing but gen-tle. She keeps her in - stru -



ments quite sharp, but claims it's ac - ci - den-tal. She'll

Building a Bridge*

Musical Activity

Have students create a "river of sound."

- Give each student a piece of yarn, about 24 inches long.
- On a flat surface, have each student arrange his/her string like a river that flows from left to right. The river could wind up and down with lots of bends and curves, or be somewhat straight, with just a few contours. Each student's river will be different.
- Then have each student conduct his/her river of sound by tracing the path with his/her finger as the rest of the class vocalizes the river's every contour on "oo." The idea is to raise the singing pitch as the string (river) winds up and lower the pitch as the string goes down.



For variety

- Tie together pieces of yarn that are different colors so that one color starts where the other left off, and have the class make up new sounds for each color.
- Have the students decide which sounds correspond with each color of string. (This is like scoring for different colors of sound.) Not only will the students raise and lower pitch according to the direction of the string, but they will also change their tone color according to the color of the string; see examples below. Have fun and be creative!
- Choose a student to conduct the class's vocalise by tracing the string's path.

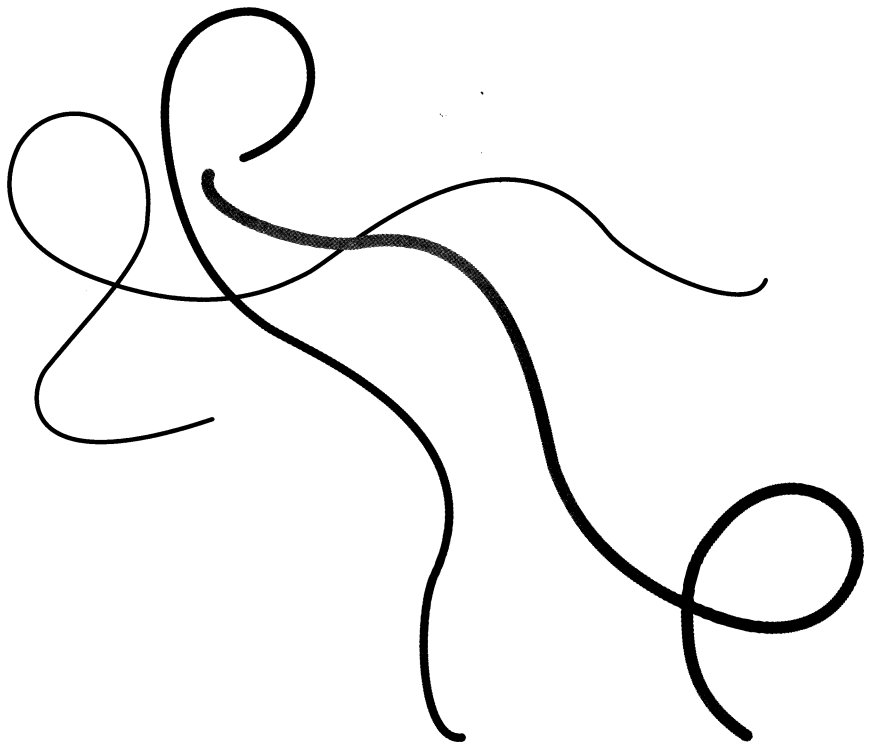
Examples:

Blue - "oo"

Red - "ah"

Green - tongue clicks

- Have students devise many new sounds.



* The Lyric Sheet has been placed on page 13 to avoid page turns in the music. 😊