

Porgy and Bess[®] For Strings

*By George Gershwin,
DuBose and Dorothy Heyward,
and Ira Gershwin*

Arranged by William Zinn

TITLE	SCORE PAGE	PARTS PAGE
Summertime	2	3
It Ain't Necessarily So	6	4
Bess, You Is My Woman Now	11	6
I Got Plenty o' Nuttin'	16	8
A Woman Is a Sometime Thing	24	10
There's a Boat Dat's Leavin' Soon for New York.....	29	12
My Man's Gone Now	34	14
Oh Lawd, I'm on My Way.....	42	16

GERSHWIN[®], GEORGE GERSHWIN[®] and IRA GERSHWIN[™]
are trademarks of Gershwin Enterprises
PORGY AND BESS[®] is a registered trademark of Porgy and Bess Enterprises
All Rights Reserved



Alfred Music Publishing Co., Inc.
P.O. Box 10003
Van Nuys, CA 91410-0003
alfred.com

Copyright © 2001 by Alfred Music Publishing Co., Inc.
All rights reserved. Printed in USA.

No part of this book shall be reproduced, arranged, adapted, recorded, publicly performed, stored in a retrieval system, or transmitted by any means without written permission from the publisher. In order to comply with copyright laws, please apply for such written permission and/or license by contacting the publisher at alfred.com/permissions.

ISBN-10: 0-7579-7742-1
ISBN-13: 978-0-7579-7742-8

STRING BASS

SUMMERTIME

By GEORGE GERSHWIN,
DuBOSE and DOROTHY HEYWARD,
and IRA GERSHWIN
Arranged by WILLIAM ZINN

Slowly **8** **10** Slower **3**

1 9 *rit.* *pp* 11 12 3 3

13 14 15 *poco rit.* 16 *mf a tempo* 17

18 *pp* 19 20 21 3 3 3

22 23 24 25 26 27 *poco rit.*

28 Tempo I 29 30 31 32 3 3 3

33 34 35 **36** 37 3 3

38 39 40 41 3

42 43 44 45

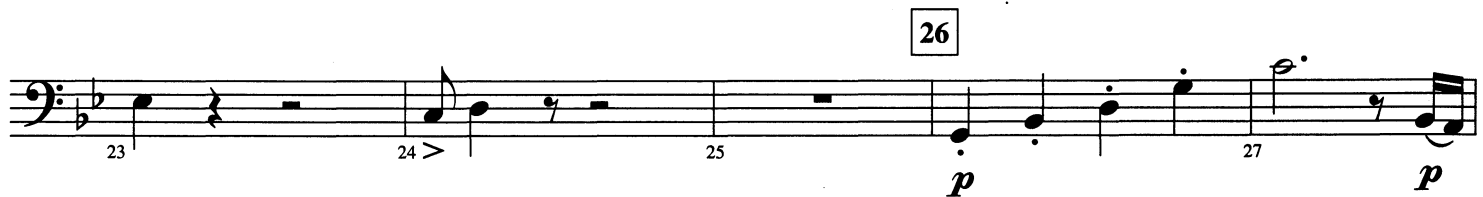
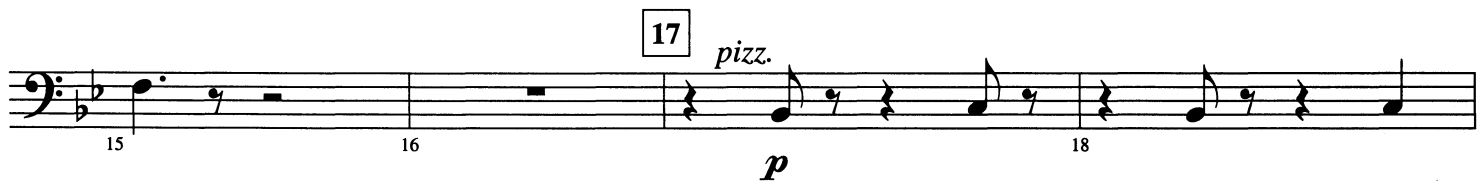
46 47 48 49

© 1935 (Renewed 1962) GEORGE GERSHWIN MUSIC, IRA GERSHWIN MUSIC
and DuBOSE AND DOROTHY HEYWARD MEMORIAL FUND
This Arrangement © 2001 GEORGE GERSHWIN MUSIC, IRA GERSHWIN MUSIC
and DuBOSE AND DOROTHY HEYWARD MEMORIAL FUND
All Rights Administered by WB MUSIC CORP.
All Rights Reserved

THERE'S A BOAT DAT'S LEAVIN' SOON FOR NEW YORK

By GEORGE GERSHWIN,
DuBOSE and DOROTHY HEYWARD,
and IRA GERSHWIN
Arranged by WILLIAM ZINN

Meno mosso 4 Moderato
3 *pizz.*



© 1935 (Renewed 1962) GEORGE GERSHWIN MUSIC, IRA GERSHWIN MUSIC
and DuBOSE AND DOROTHY HEYWARD MEMORIAL FUND
This Arrangement © 2001 GEORGE GERSHWIN MUSIC, IRA GERSHWIN MUSIC
and DuBOSE AND DOROTHY HEYWARD MEMORIAL FUND
All Rights Administered by WB MUSIC CORP.