

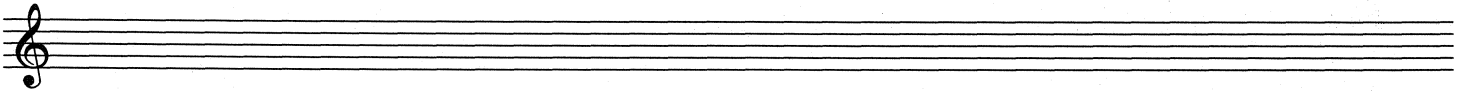
# Contents

|  | Page # | CD Track # |
|--|--------|------------|
| Tuning Notes .....                                 |        | 1          |
| <b>Chapter 1: Reading Fundamentals</b> .....       | 6      |            |
| <b>Chapter 2: Reading Rhythms</b> .....            | 8      |            |
| Basic Rhythms .....                                | 8      | 2-6        |
| Introducing Eighth Notes .....                     | 11     | 7-8        |
| Introducing Sixteenth Notes .....                  | 13     | 9-13       |
| The Sixteenth Note Rest .....                      | 18     | 14-15      |
| The Tie .....                                      | 20     | 16-17      |
| The Dot .....                                      | 22     | 18-21      |
| The Triplet .....                                  | 27     | 22-24      |
| Recapitulation .....                               | 31     | 25         |
| <b>Chapter 3: Rhythms and Pitches</b> .....        | 32     |            |
| Quarter and Eighth Note Exercises .....            | 33     | 26-37      |
| <b>Chapter 4: Intervals</b> .....                  | 42     |            |
| Exercises in 3rds .....                            | 43     | 38-39      |
| Exercises in 4ths .....                            | 44     | 40-41      |
| Exercises in 5ths .....                            | 45     | 42-43      |
| Exercises in Octaves .....                         | 46     | 44-45      |
| <b>Chapter 5: Accidentals</b> .....                | 47     | 46-48      |
| Enharmonic Equivalents .....                       | 51     | 49         |
| <b>Chapter 6: Key Signatures</b> .....             | 52     |            |
| Circle of Fifths .....                             | 52     |            |
| Key Signatures .....                               | 53     |            |
| Exercises in Major and Minor Keys .....            | 56     | 50-61      |
| The Entire Fretboard up to the 14th Fret .....     | 62     |            |
| Major Scales .....                                 | 63     |            |
| Minor Scales .....                                 | 66     |            |
| <b>Chapter 7: Guitar Patterns and Styles</b> ..... | 69     |            |
| Rock, Blues .....                                  | 69     | 62-65      |
| R&B, Pop, Funk .....                               | 69     | 66-69      |
| Reggae, Latin .....                                | 70     | 70-73      |
| <b>Chapter 8: Rhythms and Chords</b> .....         |        |            |
| The House Is Rising .....                          | 71     | 74         |
| Keep Coming Around .....                           | 71     | 75         |
| The King .....                                     | 72     | 76         |
| Mr. Brown .....                                    | 72     | 77         |
| Jimi's Vamp .....                                  | 73     | 78         |
| One Long Train .....                               | 73     | 79         |
| Matchbox Girl .....                                | 74     | 80         |
| Back Again .....                                   | 74     | 81         |
| Deep Fried .....                                   | 75     | 82         |
| I Remember Bob .....                               | 75     | 83         |
| Glossary of Music Terms and Symbols .....          | 76     |            |

# Chapter 1: Reading Fundamentals

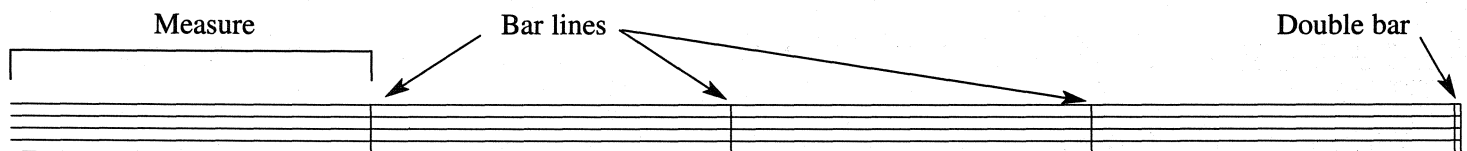
## Staff and Clef

A music staff has five lines and four spaces. Guitar music is written in treble clef.



## Measures and Bar Lines

Bar lines divide the staff into small sections called measures or bars. A measure is the space between two bar lines. The end of a large section (e.g., Verse, Chorus, Bridge) is marked by a double bar.



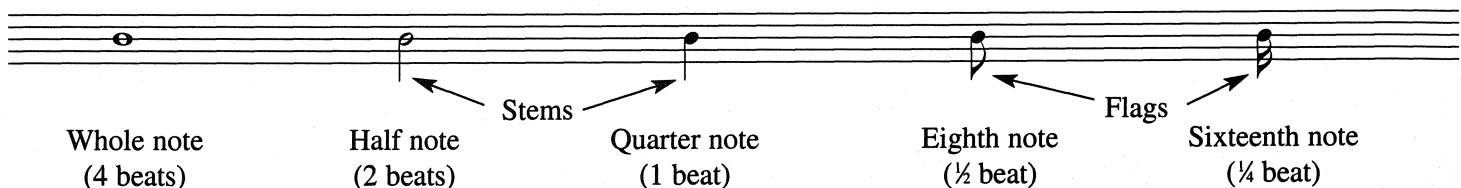
## Time Signatures

The most common time signature in popular music is  $\frac{4}{4}$ . In this case, the top number indicates there are four beats, or counts, per measure. The bottom number indicates each count is the equivalent of a quarter note. All exercises in this book are written in  $\frac{4}{4}$ , also known as "Common time."

## Note Duration

The shape of a note indicates its duration or "value." Some notes are hollow, some have stems, and some have stems with flags.

### Here Are the Five Primary Note Values



Stem and flag direction (up or down) does not affect the note value.

# The Entire Fretboard up to the 14<sup>th</sup> Fret

## Guitar Fingerboard Chart

|              | E-string | A-string | D-string | G-string | B-string | E-string |
|--------------|----------|----------|----------|----------|----------|----------|
| Open strings | E        | A        | D        | G        | B        | E        |
| 1st fret     | F        | A# Bb    | D# Eb    | G# Ab    | C        | F        |
| 2nd fret     | F# Gb    | B        | E        | A        | C# Db    | F# Gb    |
| 3rd fret     | G        | C        | F        | A# Bb    | D        | G        |
| 4th fret     | G# Ab    | C# Db    | F# Gb    | B        | D# Eb    | G# Ab    |
| 5th fret     | A        | D        | G        | C        | E        | A        |
| 6th fret     | A# Bb    | D# Eb    | G# Ab    | C# Db    | F        | A# Bb    |
| 7th fret     | B        | E        | A        | D        | F# Gb    | B        |
| 8th fret     | C        | F        | A# Bb    | D# Eb    | G        | C        |
| 9th fret     | C# Db    | F# Gb    | B        | E        | G# Ab    | C# Db    |
| 10th fret    | D        | G        | C        | F        | A        | D        |
| 11th fret    | D# Eb    | G# Ab    | C# Db    | F# Gb    | A# Bb    | D# Eb    |
| 12th fret    | E        | A        | D        | G        | B        | E        |
| 13th fret    | F        | A# Bb    | D# Eb    | G# Ab    | C        | F        |
| 14th fret    | F# Gb    | B        | E        | A        | C# Db    | F# Gb    |